

Property Code Numbers

Handbook F-43

August, 1994
Transmittal Letter 3

- A. Explanation.** This is a complete revision of Handbook F-43, *Property Code Numbers*. The changes incorporate new personal property code numbers previously announced in *Postal Bulletin* articles from December 1987 to June 1994 (through accounting period 10).
- B. Rescission.** This revision replaces all previous editions of Handbook F-43.
- C. Distribution**
1. This document is being distributed in an electronic format to the following organizations:
 - Managers, Finance (Area and District)
 - Area Vice Presidents
 - Inspection Service Field Divisions
 - Mail Equipment Shops
 - Mail Transport Equipment Centers
 - Accounting Service Centers
 - Information Systems Service Centers
 - Purchasing Service Centers
 - CAG A–E Post Offices
 - Bulk Mail Centers
 - Airport Mail Centers
 - Headquarters
 2. Additional electronic copies may be ordered from:

RALEIGH ISSC
4200 WAKE FOREST RD
RALEIGH NC 27668
 3. Hard copies may be ordered from the materiel distribution centers (MDC) using Form 7380, *MDC Supply Requisition*.
- D. Comments**
1. Address all questions in writing regarding the content of this directive to:

MANAGER
NATIONAL ACCOUNTING
FINANCE
UNITED STATES POSTAL SERVICE
476 L'ENFANT PLAZA SW RM 8831
WASHINGTON DC 20260-5241
 2. Address all suggestions regarding the organization or language of this directive to:

CORPORATE PUBLISHING AND INFORMATION MANAGEMENT
UNITED STATES POSTAL SERVICE
475 L'ENFANT PLAZA SW RM 2800
WASHINGTON DC 20260-1540

E. Effective Date. This revision is effective upon receipt.



Michael J. Riley
Chief Financial Officer
Senior Vice President, Finance



M. Richard Porras
Vice President, Finance
Controller

Contents

- 1 Property Code Numbers 1**
 - 11 What Property Code Numbers Are 1**
 - 12 How to Obtain a Property Code Number 1**
 - 121 To Find a PCN in This Handbook 1
 - 122 To Assign a PCN to a Property Item 1
 - 123 To Obtain a New PCN 2
 - 124 To Add Descriptive Data 2
- 2 Property Code Number Classifications 3**
 - 21 Generic Grouping Guide 3**
 - 22 Groups, Classes, and Items 4**
- 3 Property Code Number Lists 21**
 - 31 Description Sequence Listing 21**
 - 32 PCN Sequence Listing 27**

1 Property Code Numbers

11 WHAT PROPERTY CODE NUMBERS ARE

Property Code Numbers (PCNs) are six-digit numbers used to identify and classify capital equipment. Capital equipment is divided into seven broad groups. The first digit in the PCN identifies the group. The remainder of the digits makes other detailed descriptions unnecessary.

12 HOW TO OBTAIN A PROPERTY CODE NUMBER

121 To Find a PCN in This Handbook

- Consult Chapter 2 for an overview of the generic groups of Property Code Numbers and a more detailed description of items within groups and classes.
- Consult Chapter 3 for lists of PCNs by alphabetical and numerical sequence.

122 To Assign a PCN to a Property Item

- Consult an expert on the equipment to be purchased to obtain an adequate identification.
- Review the PCN descriptions in this handbook and assign the requested property a number from the appropriate category.

If the PCN is not listed in this handbook, it may have been issued after this handbook was published. Consult the *Postal Bulletin* index issue (under the headline "Finance"). If you do not find the PCN and are reasonably sure that a PCN exists for that item, or if you do not have access to a publication subsequent to this handbook, contact:

ST LOUIS ASC PROPERTY SECTION
ST LOUIS MO 63180-9472
(314-436-5577)

Record the selected PCN in the correct block on the procurement document. This step is *most* important because the Accounting Service Center capitalizes the equipment according to your selection. The PCN's

corresponding account number should be included on the procurement document.

123 To Obtain a New PCN

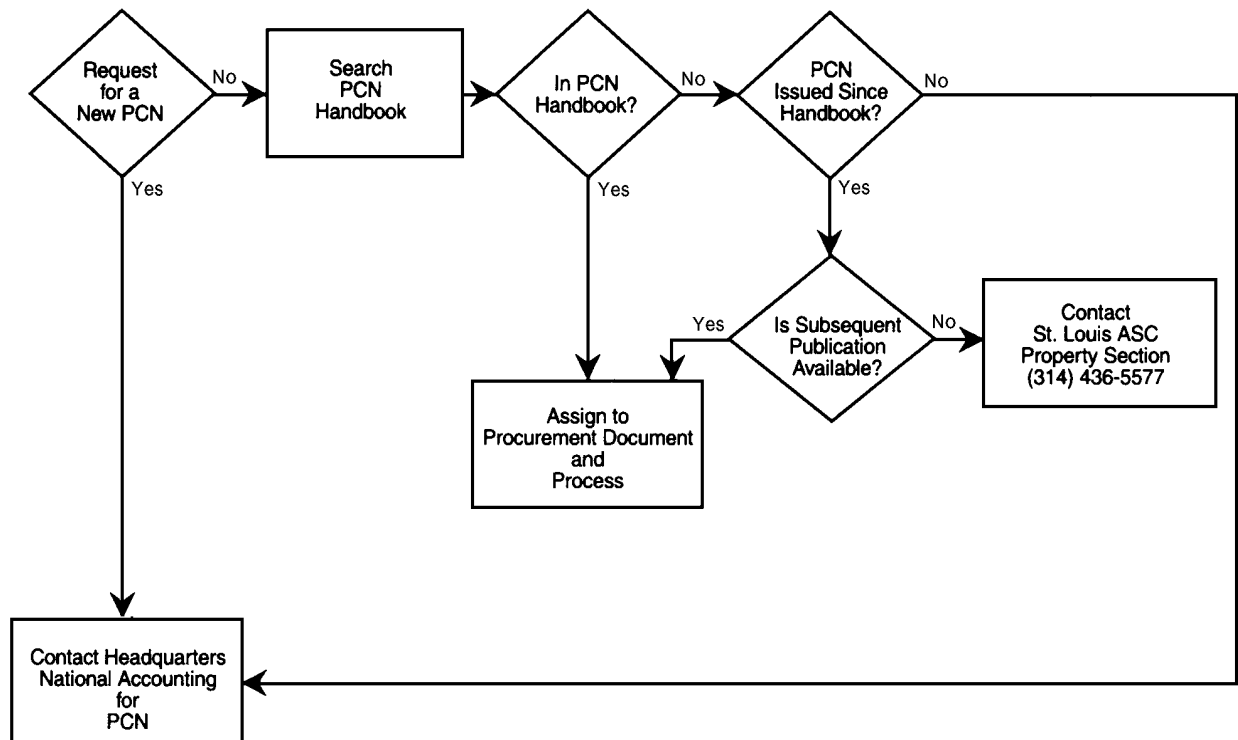
- Consult Headquarters National Accounting to request a new PCN. The St. Louis ASC Property Section maintains responsibility for issuing PCNs according to the following guidelines:
 - a. No PCN will be issued for unique property items costing less than \$10,000 unless an item is normally ordered in quantities of 25 or more.
 - b. No PCN will be issued to specific equipment, such as a particular make or model of an item.

124 To Add Descriptive Data

- To include additional descriptive data in the property record file, record the data on Form 961–A, *Post Office Property Record* (one–part continuous), and return it to the St. Louis Accounting Service Center, which will issue a new card with the additional data.

Capitalization policy for personal property can be found in Handbook F–26, *Personal Property Accounting*.

How to Obtain a PCN



2 Property Code Number Classifications

21 GENERIC GROUPING GUIDE

Property is listed by generic grouping. Each group is divided into classes. The classes are identified by the first two digits of the PCN.

Custodial, Maintenance, and Building Equipment

- 20--.. Custodial Equipment
- 21--.. Maintenance Equipment
- 22--.. Building Equipment
- 23--.. Dock and Ramp Equipment
- 24--.. Portable Sheds/Shelters/Storage/Post Offices

Administrative and General Support Equipment

- 30--.. Office Furniture
- 31--.. Filing Equipment
- 32--.. Office Machines
- 33--.. Other Office and Administrative Equipment
- 34--.. Sign Shop Equipment
- 35--.. Reproduction and Print Shop Equipment
- 36--.. Communications Equipment
- 37--.. Access Control and Protection Equipment
- 39--.. Computers and Other ADP Equipment

Mail Preparation, Handling, and Support Equipment

- 40--.. Mail Preparation Equipment
- 42--.. Mail Handling Equipment
- 44--.. Other Mail Processing Support Equipment

Vehicle Maintenance Equipment

- 60--.. Vehicle Maintenance Equipment

Lobby, Window, Self-Service, and Support Equipment

- 70--.. Lobby Equipment
- 71--.. Window Service Equipment
- 72--.. Self-Service Equipment
- 73--.. Coin/Currency Equipment, Safes, Containers, and Vaults

Personnel and Miscellaneous Equipment

- 80--.. Cafeteria Equipment
- 81--.. Photography Equipment
- 82--.. Audiovisual Equipment
- 83--.. CCTV, Television, and Video Equipment
- 85--.. Mail Equipment Shops and Mailbag Facility Equipment
- 86--.. Special Manufacturing Machines
- 87--.. Fire, Rescue, and Safety Equipment
- 89--.. Aircraft

Mechanization Equipment

- 90--.. Miscellaneous Mechanization Equipment
- 91--.. Letter Sorting Equipment
- 92--.. Flats Sorting Equipment
- 93--.. Parcel Sorting Equipment
- 94--.. Sack Sorting Equipment
- 95--.. Bar Code Reader Equipment
- 96--.. Optical Character Reader Equipment
- 97--.. BMC Specialized Systems
- 99--.. Mechanization Installation Cost

22 GROUPS, CLASSES, AND ITEMS

Group 1

Custodial, Maintenance, and Building Equipment

This group contains the equipment necessary to maintain buildings to continue operations for their intended purpose. The group includes custodial, maintenance, and building equipment; dock and ramp equipment; and portable buildings.

20--.-- Custodial Equipment

Floor polishers and vacuum cleaning equipment, including self-propelled sweepers and all equipment used by custodial force to maintain Postal Service buildings and grounds.

2010.00 Polisher/Scrubber, Floor

Includes all equipment capable of polishing and scrubbing all types of floors (combination-type equipment), including necessary attachments for equipment's operation.

2010.10 Polisher, Floor

Includes disk- and cylinder-type polishers (single-purpose machines).

2010.20 Scrubbing Machine

Includes mobile scrubbers, scrubber/vacuum, and baseboard types (single-purpose machines).

2010.30 Tank, Mopping

Includes all tanks used for mopping (specialized mopping equipment).

2010.40 Waxer, Floor

Includes specialized floor waxing equipment.

2020.00 Vacuum Cleaner

Includes electric and gas vacuum cleaners used for furnace, shop, and house (heavy- and light-duty types). Excludes vacuum cleaner equipment that is part of another class of equipment, such as scrubbing machines.

2030.00 Sweeper, Lawn

2030.10 Sweeper, Manual

2030.20 Sweeper, Powered

Includes lawn, sidewalk, and hard-surface sweepers (all powered sweeping equipment).

2030.30 Sweeper Accessory/Attachment

Includes magnetic attachment and vacuum mower attachment.

2040.00 Carpet Cleaning Machine

2040.10 Upholstery Cleaning Machine

2040.20 Washer, Clothes

2040.30 Washing/Cleaning Machine

Includes machines used for various types of building cleaning, such as fluorescent light fixtures, venetian blinds, building maintenance window washing, and any other machine used to clean buildings.

2050.00 Mower, Lawn

Includes gas and electric mowers. Excludes tractor-powered mowers.

2050.10 Tractor, Lawn and Yard Type

Includes all tractors, multipurpose or specialty function, both gasoline and diesel powered, used to maintain Postal Service property.

2050.11 Tractor and Mower Accessories

Includes all accessories that must be pulled or powered by a tractor.

2050.90 Lawn and Yard, Miscellaneous Equipment

Includes all other lawn and yard equipment not readily identified in another class of equipment, including powered leaf blower.

2060.00 Snow Blower

2060.10 Spreader, Ice and Snow Control

Includes gas-powered spreaders and those requiring motorized vehicles.

2060.90 Snow/Ice Removal/Control, Miscellaneous Equipment

Includes snow blade, broom, plow, and any other type of accessory used with snow- or ice-moving equipment.

2070.10 Sewer Maintenance Equipment

Includes sewer roofer, sewer auger, and all other pipe- and sink-cleaning equipment, both manual and power.

- 2080.00 Baler, Paper** ampere volt, and battery; and all other equipment used to test or measure electrical circuits.
- 2080.10 Cart/Truck, Custodial**
Includes trash collection vehicle, utility truck, and supply cart.
- 2080.20 Container Trash, Scrap, Disposal**
Includes all trash and scrap disposal containers and hoppers.
- 2080.30 Packer/Compactor, Trash, Disposal**
Includes compactor/packer used for trash disposal.
- 21--.-- Maintenance Equipment**
Testing and measuring devices, metal- and woodworking equipment, battery chargers, and welding equipment, including equipment used by maintenance organizations to maintain and support Postal Service buildings.
- 2100.00 Generator, Signal**
Includes low- and standard-frequency generator equipment, VHF signal, pulse square wave, time delay, and electric sweep.
- 2100.02 Infrared Viewer**
- 2100.04 Recorder, Plotting**
Note: This item must be used with an oscilloscope
- 2100.06 Testing/Measuring Equipment, Air**
Includes testers and samplers for flue gas, air dust, and air quality; portable air meter; and toxic fume detector.
- 2100.08 Testing/Measuring Equipment, Chemical**
Includes pH meters, test chamber salt spray, and test chemicator MC.
- 2100.10 Testing/Measuring Equipment, Distance**
Includes mileometer survey and gauge height.
- 2100.12 Testing/Measuring Equipment, Electrical**
Includes watt thermistor, millimeter, helios micrometer, volt ohm, digital multimeter, voltmeter, power directional, conductance, volt recording chart, kelvin bridge, megohm bridge, test pulse probe, current potential set electronic frequency clamp, and indicator dial set meters; analyzing equipment, such as distortion, spectrum, and circuitry; testing equipment, such as tube conduct, tube emission, transistor, stroboscope, ammeter,
- 2100.14 Testing/Measuring Equipment, Fuel**
Includes meter, fuel odometer, fuel gas kit analyzer, and combustible gas kit.
- 2100.16 Testing/Measuring Equipment, Laboratory**
Includes postal laboratory test equipment, meter deviation FM, spectroradiometer, and all other equipment used for laboratory testing/measuring. Excludes other testing and measuring equipment in PCN 2100 series.
- 2100.18 Testing/Measuring Equipment, Light**
Includes meters to measure and test foot-candle and ultraviolet light.
- 2100.20 Testing/Measuring Equipment, Optical**
Includes bar code reflectometer, optical comparator, Eq scanner, photometer radiometer, viewing microscope, and all other equipment associated with optical measurement.
- 2100.22 Testing/Measuring Equipment, Oscilloscope**
Includes all oscilloscope-type equipment, such as oscillator audio, oscillograph, and oscilloscope time base units.
- 2100.24 Testing/Measuring Equipment, Physical**
Includes pressure recorder, equipment gauge thickness tester, impact tester, gauge accuracy tester, hardness tester, impactograph, impact measurer, pantograph with table, and all other equipment associated with physical testing and measuring.
- 2100.26 Testing/Measuring Equipment, Sound**
Includes sound level calibration, audiometer, octave dB noise analyzer, and sound meter.
- 2100.28 Testing/Measuring Equipment, Speed**
Includes velometer, odometer, tachometer, and speed indicator.
- 2100.30 Testing/Measuring Equipment, Temperature**
Includes humidity/temperature recorder, digital probe thermometer, optical pyrometer, temperature test chamber, and infrared pistol thermometer.

<p>2100.32 Testing/Measuring Equipment, Standard Sets</p> <p>Includes weights, comparator test scale set, solid state goniometers, and color reflect standards set.</p> <p>2100.34 Testing/Measuring Equipment, Water/Moisture</p> <p>2100.40 Test/Measuring Equipment Television Station</p> <p>2110.00 Bender/Brake, Metal</p> <p>Includes manual steel bender with shear, universal pan brake/box, metal brake press, and metal bender brake sheet.</p> <p>2110.02 Cutter, Metal</p> <p>Includes broaches, files, reamers, and flame cutting-tools.</p> <p>2110.04 Drill</p> <p>Includes air, high-speed, pneumatic, electric, portable, and manual drills. Excludes drill presses.</p> <p>2110.06 Drill Press</p> <p>Includes all drill presses, drill spindles, multiple spindle, and drilling tapping machines.</p> <p>2110.08 Finishing Equipment, Metal</p> <p>Includes galvanizing, tinning, oiling, picking, electroplating, and anodizing equipment; finish abrasive; and finish belts.</p> <p>2110.10 Forming Machine, Metal</p> <p>Includes all electric or manual machines that reshape metal.</p> <p>2110.12 Grinder</p> <p>Includes grinders that bore, cut, and finish metals. Excludes grinders used in the VMF facilities to grind engine valves.</p> <p>2110.14 Hammer Machine, Metal</p> <p>2110.16 Heat Treat Equipment</p> <p>2110.18 Jointer, Wood</p> <p>2110.20 Lathe</p> <p>Includes lathe armature.</p> <p>2110.22 Milling Machine</p> <p>Includes pantomill gorton and milling/profiling machine.</p> <p>2110.26 Notcher</p>	<p>2110.28 Pipe Bending/Cutting/Threading Equipment</p> <p>Includes pipe bending, cutting pipe oster, and threading machine.</p> <p>2110.30 Planer</p> <p>2110.32 Press, Arbor/Power</p> <p>Includes fleet frame press, turret punch press, power pillar press, power double-action press, and air press machine.</p> <p>2110.36 Riveting Equipment</p> <p>2110.38 Sander</p> <p>Includes floor and handheld models.</p> <p>2110.40 Saws and Saw Equipment</p> <p>Includes bench saw, hacksaw, saw filing machine, saw arbor, saw woodwork, and all other saws and saw-related equipment.</p> <p>2110.42 Shear, Metal</p> <p>2120.00 Charger, Battery</p> <p>2120.10 Compressor, Air</p> <p>2120.20 Key Duplicating/Cutting Machine</p> <p>Includes duplicating/cutting machines that may be one unit or individual units.</p> <p>2120.30 Lacer, Belt</p> <p>Includes lacer-beltting tool and attachments.</p> <p>2120.40 Mixer, Concrete</p> <p>2120.50 Soldering/Desoldering Equipment</p> <p>2120.60 Strapping Machine, Steel</p> <p>Includes all machines used to tie or bind equipment or material for shipment or storage.</p> <p>2120.70 Vise</p> <p>Includes mounted or portable vises.</p> <p>2120.80 Welding Equipment</p> <p>Includes booth, welder, band saw blades, oxygen tank, acetylene tank, welding table, holding and positioning equipment, and all equipment associated with welding, both industrial and portable.</p> <p>2120.90 Maintenance, Miscellaneous Tools and Equipment</p> <p>Includes workbench, fluorescent tube disposal unit, slitting machine belt, electric router, incinerator, pneumatic polisher, cotton bale clamp, chipping tool, machine shaper, glass and plastic cutter, power sprayer, heavy-duty bench, and all other tools and equipment not identified in other item classes.</p>
---	--

- 2130.00 Cleaner, Air Conditioner**
- 2130.10 Cleaner, Boiler Tubes**
Includes power wire brush, electric boiler tubes, cleaner gun condenser, and all cleaning devices for boiler and condenser tubes.
- 2130.20 Cleaner, Parts**
- 2140.00 Crane**
Includes portable or floor model gantry crane and wrecker crane, both hydraulic and electric.
- 2140.10 Hoist**
- 2140.20 Ladder, Safety Platform**
- 2140.25 Lift, Battery**
- 2140.30 Lift, Table**
- 2140.40 Lift Platform, Cleaning/Maintenance**
Includes power-lift cleaning platform and high clean telescopic lift.
- 2150.00 Cabinet, Tool and Parts**
Includes parts storage bin, storage cabinet for small parts, tool and storage cabinet, and storage cabinet for flammables.
- 2150.10 Rack, Maintenance**
Includes rack cylinder, rack battery, drum tilt unit, and gravity rack storage.
- 2160.00 Paint Shop Equipment, Miscellaneous**
Includes vibrator paint mixer, simplex dryer, paint booth spray waterfall, speed vacuum, paint conditioner, and all other equipment associated with a paint shop.
- 2160.10 Sprayer, Paint**
- 2160.20 Stripe Painting Equipment**
Includes marker line striper and machine line striper.
- 22--.-- Building Equipment**
- 2200.00 Air Conditioner**
Includes complete air conditioning equipment systems and plants. Also includes store-type units, window- and room-type units, marine-type units, and air conditioning plants and systems.
- 2200.10 Cooler, Room**
Includes portable water cooler units.
- 2200.20 Humidifier**
- 2210.00 Alternator, Power Plant**
- 2210.10 Generator**
Includes gas, diesel, and electric generators.
- 2210.20 Power Supply**
Includes power packs and power converters.
- 2210.30 Transformer, Portable**
- 2220.00 Air Curtain, Entrance/Exit Door**
- 2220.10 Board, Directory, Control or Miscellaneous**
Includes progress chart board, vehicle assignment chart board, production control board, and wall-mounted sliding board.
- 2220.20 Clock, Master Control and Miscellaneous**
Includes master control clocks and grandfather clocks.
- 2220.30 Console, Control**
Includes remote control console digital selection and readout data digital system.
- 2220.40 Heater, Portable**
Includes space heater and overhead steam heater, both gas and electric. Excludes units connected to the heating and air conditioning system.
- 2220.50 Pump, Miscellaneous Portable**
Includes sump pumps, vacuum pumps, and portable pumps for gas, water, liquids, and air.
- 2220.60 Sign, Indoor/Outdoor**
Includes all permanent display signs, both illuminated and nonilluminated.
- 2220.90 Building Equipment, Miscellaneous**
Includes air cleaner, electronic flagpole, moisture condenser, portable hand dryer, portable dock equipment, and other equipment not identified in other classes of building equipment.
- 23--.-- Dock and Ramp Equipment**
- 2300.00 Dockboard/Dockramp, Portable**
Includes leveling dock and yard ramp with adjustable wheel equipment.
- 2300.10 Platform Elevator/Lift, Portable**
Includes platform scissors lift, platform truck leveler, and platform elevators. Units may be manually operated, hydraulic, or electric. Excludes units permanently attached to buildings.
- 2300.20 Wheel Raiser**
- 24--.-- Portable Sheds/Shelters/Storage/Post Offices**

2400.00 Mobile Home/Post Office

Includes all mobile homes whether used as temporary office facilities or living quarters. Excludes self-powered mobile homes and any equipment requiring license plates. Also excludes mobile homes permanently attached at a certain location.

2400.10 Trailer, Utility/Storage Building

Includes all trailer and storage buildings that are readily movable. Units usually have wheels and can be easily transported over the highway to another location. Units may be used as mobile post office, parts storage building, or multipurpose building. Excludes self-powered post offices and any equipment requiring license plates. Also excludes trailers and storage buildings permanently attached at a certain location.

2400.20 Shed, Storage

Includes small, portable storage facilities that usually remain on site indefinitely. Units may be moved to another location but do not have wheels.

2400.30 Shelter, Dock or Yard Type**2400.40 Shelter, Security Guard**

Includes all shelter or coverage facilities provided to personnel safeguarding USPS property.

2400.50 Toilet, Portable

Includes all portable gas, electric, and chemical toilets.

Group 2**Administrative and General Support Equipment****30--.-- Office Furniture****3000.00 Art/Statuary/Decorator Items**

Includes items, such as easels, Postal Service seals and plaques, paintings, and statues or busts, used to create and display various art works or memorabilia.

3000.10 Bookcase

Includes storage and display cases for books and publications.

3000.20 Chair

Includes overstuffed chair, upholstered conference chair, and executive chair.

3000.30 Couch

Includes davenport, executive sofa bed, and settee.

3000.40 Credenza**3000.50 Desk/Workstation**

Includes all desks or workstations for secretarial work, word processing, data processing, or any other office function. Includes equipment such as study carrel desk, flexiwriter work counter, and data station.

3000.60 Rack, Office, Miscellaneous

Includes newspaper rack, ADP reel rack, pressure-label drying rack, and audiovisual equipment rack.

3000.70 Table

Includes executive table, register line-up table, console mailgram equipment table, and special purpose office table.

3000.90 Office Furniture, Miscellaneous

Includes pianos and office planters.

31--.-- Filing Equipment**3100.00 Cabinet, File**

Includes conserva roll-out file, insulated record cabinet, section storage file, and stamp storage cabinet.

3100.04 Cabinet, File Card

Includes case card catalog cabinet and card exam with base top cabinet.

3100.08 Cabinet, File, Lateral**3100.12 Cabinet, File, Security**

Includes cabinet used to control accountable stock or valuables within office.

3100.16 Cabinet, File/Stand, Visible Records

Includes visible files and multiple visible slide cabinet.

3100.20 File, Automated System Unit

Includes file, elevator with hasp for locking, electrofile console, automated random file system, and automated storage unit.

3100.24 File, Rotary**3100.28 File Shelving**

Includes library bookshelves, file shelf, and storage unit with open-face adjustable shelves.

- 3100.32 Cabinet, ADP**
Includes cabinet for storage reels, ADP auxiliary cabinet, and ADP output data cabinet.
- 3100.36 Cabinet, Map/Plan**
Includes file section for maps and plans, and cabinet file for maps and blueprints.
- 3100.40 Cabinet, Laboratory**
Includes student laboratory complex.
- 3100.44 Cabinet, Microfilm/Microfiche**
- 3100.48 Cabinet, Storage**
Includes storage wardrobe, telephone cabinet, office mailing center cabinet, cabinet with adjustable compartments, and executive cabinet.
- 32--.-- Office Machines**
- 3200.00 Calculator**
Includes handheld and desktop calculators with or without tape and printing calculators with tape reader or mathwriter keyboard.
- 3200.10 Calculator, Programmable**
Includes handheld, desktop, and all other calculators with programmable features.
- 3210.00 Dictating/Transcribing Equipment**
Includes dictating soundscriber, disk belt recorder, disk belt transcriber, portable magnetic transcriber with cassette, centralized dictating system, and all other dictating and transcribing equipment. Excludes any centralized equipment covered under word processing system.
- 3220.00 Typewriter, Electric**
Includes all electric typewriters, except those with special capabilities. Excludes memory typewriters and magnetic card typewriters.
- 3220.10 Typewriter, Extended Capabilities**
Includes typewriters with autorun feature, magnetic card control, memory, paragraph selection, and other automatic features.
- 3250.00 Imprinting Machine**
- 3250.04 Opener, Envelope**
- 3250.12 Sealer, Envelope**
- 3250.16 Shredder**
Includes shredders that dissect paper without performing any other function. Excludes shredders identified in 3250.20, which also pulverize paper.
- 3250.20 Shredder and Pulper**
Includes machines that pulverize paper.
- 3250.24 Shredder Sound Enclosure**
Includes equipment to reduce the sound of operating shredders.
- 3250.28 Signer, Check or Other**
Includes automatic pen and signature machines.
- 3250.32 Tickometer**
Note: A machine that sequentially numbers documents.
- 3250.90 Office Machines and Equipment, Miscellaneous**
Includes all office machines and equipment not identified in another class, such as check writers, numbering machines, and labeling machines.
- 33--.-- Other Office and Administrative Equipment**
- 3300.00 Cart, Office Mailroom**
Includes case signal card cart, roll-about cart, distribution mail cart, and mobile mail cart.
- 3300.10 Drafting Equipment**
Includes drafting boards, drafting sets, and drafting machines.
- 3300.12 Drafting Table**
- 3300.20 Surveying Equipment**
Includes transit and surveyor level.
- 34--.-- Sign Shop Equipment**
- 3400.00 Lettering Equipment and Systems**
Includes engravograph machines, mechanical letterer, and lettering systems.
- 3400.10 Printer, Sign and Showcard**
- 3400.20 Sign Shop, Miscellaneous Equipment**
Includes dry silk-screen rack, sign face vacuum applicator, and screen-printing squeegee.
- 35--.-- Reproduction and Print Shop Equipment**
- 3500.00 Addressing Machine**
Includes addressograph machines, address stenciling machines, envelope address printers, and scriptic addressing machines.

- 3500.04 Binding Machine**
Includes press bookbinding machines, punchbinding paper machines, and plastic strip binders.
- 3500.06 Collator**
Includes collator and sorter equipment.
- 3500.08 Collator Binder**
Includes multifunction equipment to collate and bind.
- 3500.10 Copying Machine**
Includes photocopy, Photostat, thermofax, and all copying equipment designed for office use. Excludes special types of copy equipment, such as plate-maker and stencil units. (Specialty equipment is identified under separate PCNs.)
- 3500.12 Cutter, Paper**
Includes all paper cutters, both manual and electric.
- 3500.14 Drill/Punch, Paper**
- 3500.16 Duplicating Equipment, Offset**
Includes ditto offset, offset press, and multigrade offset machines.
- 3500.18 Duplicating Equipment, Plate-maker Unit**
Includes plate-making equipment used with offset duplicating equipment.
- 3500.20 Duplicating Equipment, Stencil Unit**
Includes ditto stencil, memo stencil, stencil processing systems, and all other stencil-type equipment.
- 3500.22 Duplicating Equipment, Transparency Unit**
Includes all types of transparency and translucency makers.
- 3500.24 Duplicating Equipment, Varityper**
Includes varityper headliner and processors.
- 3500.26 Embossing Machine**
- 3500.28 Feeder, Addressing Equipment**
Includes all addressing equipment with automatic feed-through suction, friction, or other automatic feed feature.
- 3500.30 Feeder, Collator Equipment**
- 3500.32 Feeder, Photocopy Equipment**
- 3500.34 Folder, Paper**
Includes all paper-folding equipment.
- 3500.36 Inserting Equipment**
- 3500.38 Jogger, Paper**
- 3500.40 Perforator**
Includes stand-alone perforating equipment and equipment attached to a computer.
- 3500.42 Phototype Composing Machine**
- 3500.44 Stapler**
- 3500.46 Stitching Machine, Book**
Includes heavy-duty binding equipment.
- 3500.90 Duplicating/Printing, Miscellaneous Equipment**
Includes ditto, graphotype, and tracing equipment; Xerox lithmaster; offset printing; copiers; and machine adhesive wax-coating equipment.
- 36--.-- Communications Equipment**
- 3600.00 Answering/Recording Unit, Telephone System**
Includes automatic telephone dialer and telephone communicators for the handicapped.
- 3600.10 Telephone System**
- 3600.90 Telephone System, Miscellaneous Equipment**
Includes telephone television and telephone booths.
- 3610.00 Radio, Base Station**
Includes mobile and portable radio base stations.
- 3610.04 Radio, Duplexor**
- 3610.08 Radio, Encoder**
Includes radio pager encoder. Excludes radio pager; see 3610.24.
- 3610.12 Radio, Frequency Filter**
- 3610.16 Radio, Inserter**
Includes radio code inserter.
- 3610.20 Radio, Mobile Telephone Units**
Includes radiophone units.
- 3610.24 Radio, Pager**
- 3610.28 Radio, Remote Control Unit or Base**
- 3610.32 Radio, Repeater**
- 3610.36 Radio, Signal Booster**
- 3610.40 Radio, System Control Console**
- 3610.44 Radio, Tower**
- 3610.48 Radio, Two-Way Portable**
Includes intercom walkie-talkie. Excludes radios for vehicles.
- 3610.52 Radio, Two-Way Vehicle**
- 3610.56 Radio, Voting System**

- 3610.90 Radio, Other Miscellaneous Types**
Includes receiver radio, transoceanic zenith radio, portable radio, radio monitor, and all other radios not identified in other PCNs. Excludes permanently mounted radios on communication systems.
- 3620.00 Public Address/Intercom/Music System**
Includes permanently mounted communication systems.
- 3630.00 Television Station Equipment**
- 37--.-- Access Control and Protection Equipment**
- 3700.00 Access Control System**
Includes remote television access control system, access control system printer, vehicle gate access control system, access control console, and Mobious I security system.
- 3700.04 Access Control System, Badge Reader**
Includes badge-operated security lock and access control card reader.
- 3700.08 Access/Security/Alarm Equipment**
Includes combination push-button lock, ultrasonic security alarm, autodialing security alarm, programmer dial alarm system, microwave security alarm, signal tracking receiver, recorder timemeter, passive microwave sensor system, CCTV monitors with motion detection, dialed number recorder, impulse recorder, and radio alarm receiver.
- 3700.12 Inspection Service Crime Laboratory Equipment**
Includes indentation reader, fingerprint kit, finger comparator, fingerprint automatic, and any other equipment used in the crime laboratory.
- 3700.16 Metal Detector**
Includes walk-through and portable concealed detectors.
- 3700.20 Microscope**
Includes microscopes with or without components or attachments.
- 3700.24 Photographic Image ID Kit**
- 3700.28 Polygraph**
Includes fixed and portable model polygraphs.
- 3700.32 Scope, Covert Vehicular**
- 3700.36 Shooting Range Equipment**
- 3700.38 Firearms**
- 3700.40 Transmitter, Surveillance**
Includes portable transmitter-receiver, transmitter radio, transmitter surveillance/FM, radio beacon transmitter, radio alarm transmitter, and transmitter television.
- 3700.44 Surveillance, Miscellaneous Equipment**
Includes binoculars, optical security boroscope, night surveillance unit, night photoscope, and night eye viewer with spotlight.
- 3700.48 X-ray Equipment, Miscellaneous**
Includes low-voltage x-ray for mail inspection.
- 39--.-- Computers and Other ADP Equipment**
- 3900.00 Channel Controller**
- 3900.10 Disk Pack**
- 3900.20 Disk Storage Drive**
Note: An assembly of magnetic disks built into a single unit that is easily connected and disconnected from a computer. Includes disk storage control, data entry disk unit, and disk storage unit.
- 3900.30 Magnetic Tape Unit**
Note: A device that contains a magnetic tape drive together with reading and writing heads and associated controls. Includes tape control, data entry tape unit, recorder post system, tape cassette unit, and auxiliary tape drive unit.
- 3900.34 Magnetic Tape Unit, Automated**
Includes automatic tape library.
- 3900.40 Memory Storage Unit**
Includes main storage, auxiliary storage, data entry storage, and auxiliary storage unit.
- 3900.44 Memory Storage, Controller**
Includes storage control units.
- 3900.50 Printer**
Note: A device that transforms binary digits into hard copy using predetermined characters. Includes computer printer/writer, printer control, printer/console station, printer storage,

- printer/keyboard combination, printer terminal, card punch printer, high-speed printer, and printout device.
- 3900.54 Printing System**
Includes photocopy printing system and all other printer combinations and accessories not identified in PCN 3900.50.
- 3900.60 Processor, Mainframe**
Note: Any computer that is not a minicomputer or microcomputer.
- 3900.64 Processor, Mainframe Controller**
Includes processor controller.
- 3900.68 Processor, Operator Console/Station**
- 3900.70 Switching Unit**
Includes channel-switching unit.
- 3905.00 Card Punch**
- 3905.04 Card Reader**
- 3905.08 Card Sorter**
- 3905.10 Cooling System, ADP**
Note: This unit is used with ADP equipment.
- 3905.12 Power Conditioner**
- 3905.14 Power Converter**
- 3905.16 Power Unit**
- 3905.18 Power Protection/Alarm Unit**
Includes power fail protection unit and uninterruptible power supply (UPS).
- 3905.50 ADP Cleaning/Maintenance Equipment**
Includes all equipment used to clean or maintain ADP equipment, such as magnetic tape cleaner and disk pack cleaner.
- 3905.60 ADP Testing/Analyzing/Monitoring Equipment**
Includes telephone test equipment, analyzer, ADP data logger, disk drive exerciser, hardware monitor, timing track writer, logic converter, multichannel system analyzer, PSDS test equipment code sampler, and ADP logic checker.
- 3910.00 Modem**
Note: Any device used to interface a microcomputer with a peripheral device or another computer over a telephone line.
Includes Teletype coupler, acoustic coupler, and ADP comp/terminal telecoupler.
- 3910.10 Multiplexor**
- Note:** An item that allows transmission of more than one signal at a time over a communications channel.
- 3910.20 Telecommunications Unit**
Note: An item that allows the exchange of information by electromagnetic means, such as through radio transmission or wires. Includes transmission control, communications control, remote communications control, portable telecommunications, telecommunications console, telecommunications adapter, and system control, access/technical.
- 3920.00 Data Entry System**
- 3920.10 Micro Data Entry/Capture System**
- 3925.00 Scanner, Controller**
- 3925.10 Scanner, Fixed Unit**
Note: An optical stationary unit that can read documents automatically and convert the input to binary signals. Includes optical/sensory converter.
- 3925.20 Scanner, Portable Unit**
Includes scanner display unit.
- 3930.00 Terminal, Badge Reader**
- 3930.10 Terminal, CRT/VDT**
Includes monitor, data entry terminal, data transmission terminal, display terminal, graphics terminal, plotting terminal, operation station terminal, portable terminal, remote job entry terminal, workstation terminal, data entry station, ADP equipment customer display post system, computer terminal voice data, entry, and ADP equipment computer terminal.
- 3930.20 Terminal, Transaction**
- 3930.30 Terminal, Point of Sale**
Includes ADP equipment, cash drawer posting system, and ADP equipment terminal posting system.
- 3930.40 Terminal, Scale Input**
- 3930.50 Terminal, Teletype**
- 3930.60 Terminal, Telecopier**
- 3940.00 Minicomputer System**
- 3940.10 Minicomputer Processor**
Includes CPU/VS and CPU/office systems.
- 3950.00 Microcomputer System**
Note: A unit usually characterized by single user, single application, with limited memory. Includes small-scale

- computer and computer microprocessor ATAP
- 3950.10 Micro Controller**
- 3950.20 Micro CRT/VDT**
- 3950.30 Microdisk Drive**
- 3950.40 Micro Keyboard**
- 3950.50 Micro Memory Storage Unit**
- 3950.60 Microprocessor**
Includes programmer fixed.
- 3950.70 Micro Tape Drive**
- 3950.80 Micro Printer**
- 3950.82 Micro Printer/Keyboard**
- 3960.00 Word Processing System**
Includes typing system (CRT, keyboard, printer) and word processing keyboard/printer.
- 3960.10 Word Processing, Terminal**
- 3960.20 Word Processing, Memory Unit**
- 3960.30 Word Processing, Controller**
- 3960.40 Word Processing, Console**
- 3960.50 Word Processing, Printer**
- 3960.60 Word Processing, Keyboard**
- 3960.70 Word Processing, Feeder**
- 3970.00 Graphics System**
Includes computer graphics display system.
- 3970.10 Graphics System, Controller**
- 3970.20 Graphics System, Display Unit**
- 3970.30 Graphics System, Plotter**
- 3980.00 Acoustical Covers/Silencing Equipment**
Includes acoustical covers for typewriter, Teletype, and ADP equipment.
- 3980.04 Adapter, ADP**
- 3980.08 Badge, Puncher**
- 3980.12 Burster, Form or Card**
Includes burster form with deleave stand, selectronic burster, and burster signer forms.
- 3980.16 Counter, Paper**
- 3980.20 Converter, Card/Paper/Tape Equipment**
Includes ADP card to tape converter, ADP equipment tape converter, and ADP converter paper/magnetic tape.
- 3980.24 Decollator**
Includes decollator carbon separator and high-speed separator.
- 3980.26 EPROM Programmer Device**

- 3980.28 Reader/Puncher, Paper Tape**
Includes ADP paper tape reader, tape puncher, and tape programmer reader.
- 3980.32 Recorder, Computer Image**
- 3980.36 Truck, Reel**
- 3990.00 Air Contract Data Collection System (ACDCS)**
- 3990.10 Delivery Receipt System, ADR**
- 3990.20 HVAC Energy Management System**
- 3990.30 Register Dispatch System, ADSRM**
- 3990.40 Computerized On-site Data Entry System**
- 3995.00 Duplicator, Microfilm/Microfiche Includes microduplicator processor and microduplicator printer.**
- 3995.10 Microfilmer, Computer Output**
- 3995.20 Reader, Microfiche**
- 3995.30 Reader/Printer, Microfiche**
- 3995.40 Reader, Microfilm**
Includes microfilm recorder, reading machine, and reading machine and microfilm viewer with retriever.
- 3995.50 Reader/Printer, Microfilm**

Group 3

Mail Preparation, Handling, and Support Equipment

- 40--.-- Mail Preparation Equipment**
- 4000.00 Culling Machine**
- 4000.10 Dual Pass Rough Cull System (DPRCS)**
- 4010.00 Canceling Machine, M-36**
- 4010.10 Canceling Machine, Mark II**
- 4010.20 Canceling/Facing Machine**
- 4010.30 Canceling Machine**
- 4010.40 Canceler Flat**
- 4010.94 Modification, Mark II Control**
- 4020.00 Diverter Edger Feeder Attachment**
- 4020.10 Edger Feeder**
- 4020.20 Edger Stacker**
- 4020.30 Inclined Feeder Assembly**
- 4020.40 Stacker Unit**
Includes stacker assembly zero pocket, stacker with motor only, stacker feed system, and letter stacker unit.
- 4020.50 Vibrator Hopper Assembly**
- 42--.-- Mail Handling Equipment**

4200.00 Conveyor

Includes aluminum wheel conveyor, sorter conveyor, portable sorter conveyor, truckmobile conveyor, horizontal conveyor, single-tilt and double-tilt conveyor, self-powered conveyor, double-elevator conveyor, roller power conveyor, horizontal sectional self-powered conveyor, edger conveyor assembly, culling and facing conveyor system, and inclined conveyor belt. Excludes extendable conveyor and tractor roller conveyor.

4200.10 Conveyor, Extendable

Includes horizontal extendable conveyor and telescoping extendable conveyor.

4200.30 Conveyor, Tractor**4200.50 Dumper, Hamper****4210.10 Rack, Tray Storage****4220.00 Strapping Machine, Nonmetallic****4220.10 Strapping System****4220.20 Tying Machine**

Includes twine tying machines, double- and single-wrap, wire tying machines, tying machine with compressor, and machines with automatic heads and bases.

4230.00 Tractor, Attachments and Accessories

Includes all attachments and accessories used with tractors identified in PCN 4230.10.

4230.10 Tractor, Industrial and Farm Type

Note: These are large, heavy-duty gas or diesel tractors. Excludes lawn and yard-type tractors.

4230.20 Tractor, Tow/Tug/Warehouse

Includes gas plat truck, electric tractor with battery rider, electric tractor without battery rider, gas tractor with three or four wheels and four-wheel tractor.

4230.30 Tractor, With Autoguidance System

Includes tractor operating in designated area along path with hidden sensor.

4230.40 Truck, Forklift

Includes all forklifts except those identified in PCNs 4230.50 and 4230.60.

4230.50 Truck, Hand Lift/Pallet**4230.60 Truck, Lift Specialized System****44--.-- Other Mail Processing Support Equipment****4400.00 Carrier, Cargo and Materials**

Includes cargo cart and self-propelled vehicle materials.

4400.10 Carrier, Personnel

Includes personnel ambulance in plant, electric cart, and personnel carrier in plant. Is not licensed for street use.

4400.20 Scooter

Includes gas- or electric-powered scooter made for plant and yard use only.

4410.00 Label Printing System

Includes label printing for sacks or pouches.

4410.10 Printer, Address Label**4410.20 Dispenser, Label****4410.30 Feeder, Label Printer****4420.00 Dispenser, Tape****4420.10 Rewrap or Patch-Up Equipment**

Includes parcel rewrap machinery, tying wrapping aid clop machinery, pack shrink plastic machinery, film package wrapper machinery, parcel rewrap equipment, packaging shrink tunnel equipment, and form/seal packaging equipment.

4430.00 Scale, Floor or Platform

Includes vehicular platform scale, portable dial scale, portable beam scale, suspendable platform scale, and automatic portable platform scale.

4430.10 Scale, Remote Console/Indicator

Includes remote weight indicator.

4440.00 Envelope Stuffer/Sealer System**Group 4****Vehicle Maintenance Equipment****60--.-- VMF Maintenance Equipment****6000.00 Body and Frame Maintenance Equipment**

Includes body frame aligner and jack body repair.

6010.00 Analyzer, Vehicle Maintenance**6010.10 Engine Maintenance Equipment**

Includes compression gauge, combustion tester, electronic engine tester, electronic ignition tester, and compression tester.

- Excludes testing equipment identified in PCN 2100.12.
- 6010.20 Grinder, Valve**
Includes valve shop mobile.
- 6010.30 Test Equipment, Vehicle Electrical Systems**
Includes testers for coil condenser/circuits, transistor regulators, alternator diode, starter battery, distributor, armature, alternator-generator, and generator-alternator-regulator.
- 6010.40 Test Equipment, Vehicle Tune-Up/Diagnosis**
Includes diesel fuel injector tester, diesel timing light, tachometer/dwell tester, vacuum pressure tester, transmission tester, air cleaner tester, and magnetic leak tester.
- 6010.50 Test Equipment, Vehicle Exhaust**
Includes carbon monoxide tester, exhaust emission analyzer tester, and exhaust emission tester.
- 6020.00 Dolly, Vehicle Towing**
Includes all dollies or carriers for towing vehicles.
- 6020.10 Jack**
Includes press jack, hydraulic jack, hand jack, trailer safety jack, pneumatic floor jack, and transmission jack.
- 6020.30 Lift, Vehicle**
- 6020.40 Stand, Vehicle Maintenance**
Includes drive-on vehicle repair stand, engine repair stand, and transmission stand.
- 6020.50 Truck, Forklift/Tow, Vehicle Maintenance**
- 6030.00 Pump, Servicing/Dispensing**
Includes motor oil pump, high- and low-pressure lubrication pump, suction oil pump, gasoline pump, and air pump.
- 6030.10 Servicing/Dispensing Equipment**
Includes gas buggy, chassis reel, air and water reel, gear reel, electric cable reel, automatic transmission reel, engine oil reel, grease gun, meter gauge, gas storage tank, and mobile and stationary fuel/lube oil blender.
- 6030.20 Tank, Gas**
- 6030.30 Tank, Oil**
- 6040.00 Tire Maintenance Equipment**
Includes tire changer/bead breaker, tire studding equipment, tire changer bead expander, tire rack, tire spreader, air with tank tube tester, and tire tube with stand tester.
- 6050.00 Cleaning Equipment, VMF Maintenance**
Includes air-operated sludge remover machine, steam oil cleaner, portable solvent cleaner, small parts washer, steam cleaner, engine air cleaner, torque converter cleaner, sandblast cleaner, automobile multiple air cleaner, and sipping machine.
- 6050.10 Washer, Vehicle**
Includes portable pressure sprayer, underbody sprayer, automobile rotary brush washer, high-pressure washer, truck washer, high-pressure truck washer, portable underbody spray pump, and all other vehicle washer systems.
- 6060.00 Wheel/Suspension Maintenance Equipment**
Includes axle caster/kingpin gauge, wheel alignment check tool, wheel alignment setter, front-end machine, wheel balancer, and spring compressor.
- 6070.00 Brake Maintenance Equipment**
Includes brake shop mobile, brake drum lathe, brake lining grinder, brake tester, brake bleeder, brake shoes grinder, and brake drum grinder.
- 6080.00 Charger, Battery—Vehicles**
Includes battery chargers and vehicle charger for two-way radios.
- 6090.00 Body, Utility Vehicle Maintenance Service**
- 6090.10 Dynamometer, Vehicle**
- 6090.20 Puller Equipment**
Includes power puller, bearing puller, hydraulic sleeve puller, and grip puller assembly.
- 6090.30 Starter, Vehicle**
Includes portable car starter and generator starter.
- 6090.90 VMF Maintenance Equipment, Miscellaneous**
Includes car gas heater, oil waste drain, torque wrench, tow bar assembly, record booth, vehicle usage monitor, speed measurement tachograph, impact wrench, main bearing micrometer, hydraulic pen

remover, honing machine, and other equipment or machinery not readily identifiable as a specific class of equipment.

Group 5

Lobby, Window, Self-Service, and Support Equipment

70--.-- Lobby Equipment

7000.00 Bulletin Board, Lobby

Includes lobby bulletin board (two face with door) and bulletin board service information center.

7000.10 Desk/Table, Lobby

Includes lobby marble table, modern formica lobby desk, and lobby formica pedestal desk.

7000.20 Dispenser, Ticket Machine

7000.30 Showcase/Display Case

Includes display unit multiplex, case exhibit, lobby showcase, philatelic display case.

7000.40 Turnstile

71--.-- Window Service Equipment

7100.10 Counterline, Window Multipurpose

7110.00 Postage Meters

7120.00 Scale, Miscellaneous

Includes automatic portable scale, drum-type scale, automatic registered metered, automatic metered gradation, and all scales used in window service except programmable electronic scale in PCN 7120.10. Excludes scales identified under mail processing.

7120.10 Scale, Programmable/Electronic

Includes computing electronic and programmable scales with CRTs.

7120.20 Integrated Retail Terminal (IRT)

72--.-- Self-Service Equipment

7200.00 Changer, Coin

7200.10 Changer, Currency

7200.20 Changer, Currency/Coin

7210.10 Multicommodity Vending Machine

Includes currency acceptance vending machines and multi-item vending machines.

7210.20 Stamp Vending Machine

Includes any stamp vending machine.

7210.30 Self-Service Postal Center (SSPC)

Includes rural self-servicing mail unit, self-service walk-up mail unit, self-service drive-up mail unit, and self-service screen line mail unit.

7210.40 Vending Console

73--.-- Coin/Currency Equipment, Safes, Security Containers, and Vaults

7300.00 Counter, Coin

Includes coin counter packager and manual coin counter.

7300.10 Counter, Currency

7300.20 Sorter/Changer, Coin

7300.30 Sorter/Counter, Coin

7300.40 Sorter, Coin

7310.00 Safe

Includes burglar-resistant concrete safes, safes for firearms storage, and computer tape storage safes.

7310.10 Safe, Vault Shell

7310.20 Security Container With Cabinet

7310.30 Vault Door/Entrance

Group 6

Personnel and Miscellaneous Equipment

80--.-- Cafeteria Equipment

8000.00 Cafe Equipment, Cabinet

8000.02 Cafe Equipment, Cart

8000.04 Cafe Equipment, Cash Register

8000.06 Cafe Equipment, Coffee Urn

8000.08 Cafe Equipment, Condiment Stand

8000.10 Cafe Equipment, Counterline

8000.12 Cafe Equipment, Dining Table

Includes dining chairs with table.

8000.14 Cafe Equipment, Dishwasher

8000.16 Cafe Equipment, Display Case

8000.18 Cafe Equipment, Disposal Unit

8000.20 Cafe Equipment, Drink Dispenser

8000.22 Cafe Equipment, Freezer

8000.24 Cafe Equipment, Fryer

8000.26 Cafe Equipment, Grill

- 8000.28 Cafe Equipment, Hood**
- 8000.32 Cafe Equipment, Ice Dispenser**
- 8000.34 Cafe Equipment, Ice Maker**
- 8000.36 Cafe Equipment, Ice Storage**
- 8000.38 Cafe Equipment, Kettle**
- 8000.40 Cafe Equipment, Kitchen Worktable**
- 8000.42 Cafe Equipment, Microwave**
- 8000.44 Cafe Equipment, Miscellaneous Cooking and Heating**
Includes tilting braising pans, hot plates, broilers, steam vegetable stack, and any cooking or heating utensil not identified in the other cafeteria equipment PCNs.
- 8000.46 Cafe Equipment, Miscellaneous Food Preparation Equipment**
Includes vegetable cutter, vegetable peeler, meat grinder, and dough preparation equipment.
- 8000.48 Cafe Equipment, Miscellaneous Appliances**
Includes equipment such as scales, combination refrigerator/sink/range, and toasters.
- 8000.50 Cafe Equipment, Mixer**
- 8000.52 Cafe Equipment, Oven**
Includes electric and gas ovens. Excludes ranges (see PCN 8000.56).
- 8000.54 Cafe Equipment, Rack/Shelving**
- 8000.56 Cafe Equipment, Range**
- 8000.58 Cafe Equipment, Refrigerator**
Includes cooler refrigerators and walk-in refrigerators.
- 8000.60 Cafe Equipment, Serv-O-Lifts**
- 8000.62 Cafe Equipment, Sink**
- 8000.64 Cafe Equipment, Slicer**
- 8000.66 Cafe Equipment, Steam Table**
- 8000.68 Cafe Equipment, Tray Handling Equipment**
- 8000.70 Cafe Equipment, Warming Cabinet**
- 801--- Medical Unit Equipment**
- 8010.00 Audiometer**
Includes dosimeter audio.
- 8010.04 Bed, Medical Unit**
Includes adjustable and nonadjustable beds.
- 8010.08 Booth, Audiometer Examining**
- 8010.12 Cabinet, Medical Unit**
Includes surgical and narcotics cabinets.
- 8010.16 Cart, Medical Unit**
- 8010.20 Chair, Medical Treatment**
- 8010.24 Electrocardiograph**
- 8010.28 Hydrocollator**
Includes heat and chiller units.
- 8010.32 Light, Medical Unit**
Includes strobe and specialist lights.
- 8010.36 Medical Instrument/Diagnostic Equipment**
Includes electronic blood pressure unit, microdiathermy defibrillator, spirometer, optometer and tonometer graphic recorder, probe, and other medical diagnostic equipment.
- 8010.40 Medical Treatment Equipment and Devices**
Includes ultraviolet lamps, whirlpool bath, infrared lights, exercise unit, muscle stimulation machine, traction aid, and all other medical treatment or therapy unit equipment.
- 8010.44 Resuscitator Manikin**
- 8010.48 Shower/Wash, Medical or Safety**
Includes eye, face, and wash fountain; safety shower; and safety eyewash.
- 8010.52 Sterilizer**
Includes sterilizers for health and surgical rooms.
- 8010.60 Table/Couch, Medical Exam/Treatment**
Includes examining table or couch, treatment table, and adjustable table.
- 8010.64 Vision Testing/Measuring Device**
Includes visual ortho-rater tester, visual reaction time, portoclinic and glare, and any other vision or measuring device.
- 8010.68 X-ray Equipment, Medical Unit**
- 803--- Trainers and Training Devices**
- 8030.00 Scoring, Test, Machine**
- 8030.02 Trainer, Basic Electricity**
- 8030.04 Trainer, Basic Hydraulic/Pneumatics**
- 8030.08 Trainer, Computer Electronics**
- 8030.12 Trainer, Drive Training System**
- 8030.16 Trainer, Electrical Systems**
- 8030.20 Trainer, Elevator Maintenance**

- 8030.24 Trainer, Keyboard**
- 8030.28 Trainer, Keyboard Parcel Sack**
- 8030.32 Trainer, LSM Training Console**
- 8030.36 Trainer, Miscellaneous HVAC and Building Systems**
Includes refrigeration trainer, air conditioning and heat system simulator, compressor service, system pumping unit, air filtering system, and natural gas safety trainer.
- 8030.40 Trainer, Miscellaneous Vehicle Systems**
Includes automotive electrical system and fuel injection pump.
- 8030.44 Trainer, Miscellaneous**
Includes trainers for safe locks; one-word, multiposition GED instructional program; jet spray printer, and multiposition sorter.
- 8030.48 Trainer, Parcel or Sack Sorter**
- 8030.52 Training System, Audiovisual**
Includes mass learning machine and all audiovisual training systems.
- 8030.56 Training Visual Aid**
- 804---- Photographic Identification Equipment**
- 8040.00 Camera, ID**
Includes photographic identification machine, timer camera, and all other cameras used for making identification photographs.
- 8040.10 Cutter, ID Badge**
- 8040.20 Laminator, ID Badge**
- 81---- Photography Equipment**
- 8100.00 Camera**
Includes surveillance camera, press camera, fingerprint camera, digital line scanning camera, and motor drive camera.
- 8100.20 Camera, Document**
- 8100.30 Camera, Microfilm**
- 8100.40 Camera, Movie**
Includes camera motion analysis.
- 8100.50 Camera, Video**
Includes closed-circuit television camera, television with control module camera, lowlight camera, microprocess monitor camera, and portable record camera.
- 8100.60 Camera, Accessories**
- 8100.70 Lens**
Includes zoom video lens, closed-circuit television zoom lens, CCTV remote control zoom lens, telephoto, and wide-angle lens.
- 8110.00 Cabinet/Special Furniture, Film Process**
Includes photography laboratory console (show size) and photographic slide cabinet.
- 8110.10 Dryer, Film Processing**
Includes film dryer cabinet, darkroom dryer package, and darkroom show model dryer.
- 8110.20 Enlarger, Film Processing**
Includes photographic laboratory enlarger for color and for black and white.
- 8110.30 Printer, Film Processing**
Includes contact printer, electro rex roto printer, digital printer, and pronto printer.
- 8110.40 Processor, Film**
Includes microfilm processor, photographic color processor, automatic paper photographic processor, and manual film photographic processor.
- 8110.50 Sink, Film Processing**
- 8110.90 Film Processing, Miscellaneous Equipment**
Includes film radiographic developer, film duplicator, film cleaner, photographic print washer, infrared spectrophotometer, microfilm case loader, and microfilm encoder.
- 82---- Audiovisual Equipment**
- 8200.00 Projector, Computer Image**
- 8200.10 Projector, Movie**
- 8200.20 Projector, Opaque**
- 8200.30 Projector, Overhead**
- 8200.40 Projector, Slide**
- 8200.50 Projector, Strip Film**
Includes photographic film image projector.
- 8200.60 Projector, Television**
- 8200.70 Screen, Projection Includes rear screen projector.**
- 8200.80 Viewer, Slide/Strip/Movie**
Includes motion picture viewer, transviewer, scanner viewer, and movie film viewing editor.
- 8200.90 Projector Accessories and Miscellaneous Equipment**
Includes film and sound synchronizer, dissolve unit projector, and slide access changer projector.

- 8210.00 Amplifier, Power/Sound Includes power amplifier and dual-channel amplifier.**
- 8210.10 Lectern**
- 8210.20 Microphone**
- 8210.30 Speaker System**
- 8220.00 Audio, Player/Recorder**
Includes miniature body recorder, record player, portable voice recorder, reel-to-reel recorder, voice wire tape recorder, dual-track recorder, central magnet recorder, message magnetic recorder, and tape/power amplifier recorder.
- 8220.10 Duplicator, Audio**
Includes reproducer tape recorder, cassette slave recorder, and audiocassette recorder.
- 8230.00 Audiovisual Special Effects Equipment**
Includes preamplifier mixer and a conversion with minisynchronization.
- 8230.10 Control Console, Audiovisual**
Includes wireless program control, CCTV control console center, remote control center, control audio/monitor panel, sound console, and multichannel stereo console.
- 8230.20 Lights and Lighting, Specialized**
Includes lighting location kit and light boom spot. Excludes room lighting.
- 8230.30 Visual Presentation Equipment**
Includes prompter and actionlite.
- 8230.90 Audiovisual, Miscellaneous Equipment**
Includes tape playback machine and audiotape loader.
- 83--.-- CCTV, Television, and Video Equipment**
- 8300.00 Closed-circuit Television System**
- 8300.10 Intercom, Closed-circuit Television**
- 8300.20 Monitor, Television**
Includes television monitor/receiver, videotape monitor, and large screen television monitor.
- 8300.30 Television**
- 8300.40 Video, Player/Recorder**
Includes videocassette player, videotape recorder, videodisk player, and videorecorder/player.
- 8300.50 Video Special Effects Equipment**
Includes video viewfinder monitor, videotape system editor, viewer keydex encoder, and video signal corrector, television film chain, and video title inserter.
- 85--.-- Mail Equipment Shops and Mailbag Facility Equipment**
- 8500.00 Grommet Machine**
- 8500.10 Key Manufacturing Machine, Mail Equipment Shops**
- 8500.20 Screw Machine**
- 8500.30 Shaping/Forming Machine**
- 8500.40 Tooling Machine, Electric Discharge**
- 8500.90 Mail Equipment Shops, Miscellaneous Equipment**
Includes tapping machines, feedstock/straightening machine, and permasine machinery.
- 8510.00 Coil Cradle Equipment**
- 8510.10 Sealer, Heat Type**
- 8510.20 Sewing Machine**
Includes sew seamer machine.
- 8510.90 Mailbag Facility, Miscellaneous Equipment**
Includes mailbag baler, lacing-cord cutter, canvas cutting machine, bag-turning machine, and cut/print/fold machine.
- 86--.-- Special Manufacturing Machines**
- 8600.00 Cardboard Case-making Machine**
- 8600.10 Forming Machine, Carton or Trays**
- 87--.-- Fire, Rescue, and Safety Equipment**
- 8700.00 Fire, Rescue, and Safety Equipment**
Includes air respirator with air supply, bomb containment device, and fire extinguisher.
- 89--.-- Aircraft**
- 8900.00 Aircraft**
- Group 7**
- Mechanization Equipment**
- 90--.-- Miscellaneous Mechanization Equipment**
- 9000.00 Bulk Conveyor**
- 9000.10 Fixed Mechanization Memory Container System**
Includes control system not built into the machine.

9000.20	Loose Mail Conveyor System	9300.40	Small Parcel/Bundle Sorter System
9000.30	Mail Preparation System	9300.50	Small Parcel/Roll Sorter System
9000.35	Monorail Sorting System	94--.--	Sack Sorting Equipment
9000.40	Multibelt Sorting System	9400.00	Sack Sorting Machine
9000.50	Multislide	95--.--	Bar Code Reader Equipment
9000.60	Pallet Unloader	9500.00	Bar Code Reader
9000.70	PP Distribution Ring	9500.10	Carrier Sequence Bar Code Sorter (CSBCS)
9000.80	Tray Transport System	9500.20	Delivery Bar Code Sorters (DBCS)
	Includes mechanized network for transporting trays inside mail processing facilities.	96--.--	Optical Character Reader Equipment
91--.--	Letter Sorting Equipment	9600.00	Reader, Optical Character
9100.00	Letter Sorting Machine, Multiposition (MPLSM)		Includes LSM optical character reader (OCR)
9100.10	Letter Sorting Machine, Single Position	9600.10	Reader, Optical Character (OCR/CS)
9100.20	LSM—Tray Conveyor System	9600.20	Remote Bar Coding Image Processing System
	Includes restricted tray handling capabilities at LSMs.	97--.--	BMC Specialized Systems
9100.30	LSM—ZIP Mail Translator	9700.00	BMC Container Loader/Unloader
9100.34	LSM—Electronic Sort Processor	9700.10	BMC Inbound-Outbound Tow Conveyor
9100.91	LSM—Expanded ZIP Retrofit	9700.20	BMC Parcel Sorting Induction Unit
	Includes cost for modifying or mechanizing LSMs. All cost contained in this PCN must be added to the capitalized LSM.	9700.22	BMC Parcel Sorting Machine
9100.92	LSM—EZR Maintenance Terminal	9700.30	BMC Process Control System
9100.94	LSM—Vacuum System	9700.40	BMC Sack Shakeout Machine
92--.--	Flats Sorting Equipment	9700.50	BMC Sack Sorter and Loader
9200.00	Flats Sorter Machine	9700.60	BMC Towveyor—Internal Tow Conveyor
9200.10	Flats Sorter Bin Unit	9700.62	BMC Towveyor—Wearbar Lubricator
9200.20	Flats Sorter Culling Unit		Includes automatic lubrication systems for BMC towveyors.
9200.30	Flats Sorter Extractor Unit	99--.--	Mechanization Installation Cost
9200.40	Flats Sorter Feed Unit	9999.98	Installation Cost, Nonfixed Mechanization
93--.--	Parcel Sorting Equipment	9999.99	Installation Cost, Fixed Mechanization
9300.00	Parcel Sorting Machine		

3 Property Code Number Lists

31 Description Sequence Listing

PCN Description	Prop. Code	Cmt. Acct.	Serv. Life	BIC	PCN Description	Prop. Code	Cmt. Acct.	Serv. Life	BIC
Access Control System Badge Reader	3700.04	86531	10	1NY	BMC Towveyor-Internal Tow Conveyor	9700.60	86231	10	1DF
Access Control System	3700.00	86531	10	1NY	BMC Towveyor-Wearbar Lubricator	9700.62	86231	10	1DF
Access/Security/Alarm Eqpt	3700.08	86531	10	1NY	Board, Directory, Control or Misc	2220.10	86532	10	2MY
Acoustical Covers/Silencing Eqpt	3980.00	86533	03	3TY	Body and Frame Maintenance Eqpt	6000.00	86532	10	2PA
Adapter, ADP	3980.04	86533	05	3TY	Body, Utility Vehicle Maintenance Service	6090.00	86532	10	2PY
Addressing Machine	3500.00	86531	05	1HC	Bookcase	3000.10	86531	10	1KA
ADP Cleaning/Maintenance Eqpt	3905.50	86533	05	3TY	Booth, Audiometer Examining	8010.08	86531	10	1RE
ADP Testing/Analyzing/Monitoring Eqpt	3905.60	86533	05	3TY	Brake Maintenance Eqpt	6070.00	86532	10	2PY
Air Conditioner	2200.00	86532	10	2MA	Building Eqpt, Misc	2220.90	86532	10	2MY
Air Contract Data Collection System (ACSCS)	3990.00	86533	03	3TY	Bulk Conveyor	9000.00	86231	10	1DF
Air Curtain, Entrance/Exit Door	2220.00	86532	10	2MY	Bulletin Board, Lobby	7000.00	86431	10	1EY
Aircraft	8900.00	86531	10	1RP	Burster, Form or Card	3980.12	86533	05	3TY
Alternator, Power Plant	2210.00	86532	10	2MC	Cabinet, ADP	3100.32	86531	10	1HY
Amplifier, Power/Sound	8210.00	86531	05	1MC	Cabinet, File	3100.00	86531	10	1HG
Analyzer, Vehicle Maintenance	6010.00	86532	10	2PB	Cabinet, File Card	3100.04	86531	10	1HG
Answering/Recording Unit, Telephone System	3600.00	86531	10	1SA	Cabinet, File, Lateral	3100.08	86531	10	1HG
Art/Statuary/Decorator Items	3000.00	86531	10	1KY	Cabinet, File, Security	3100.12	86531	10	1HG
Audio, Player/Recorder	8220.00	86531	10	1MF	Cabinet, File/Stand, Visible	3100.16	86531	10	1HG
Audiometer	8010.00	86531	10	1RE	Cabinet, Laboratory	3100.40	86531	10	1HY
Audiovisual, Misc Eqpt	8230.90	86531	10	1MY	Cabinet, Map/Plan	3100.36	86531	10	1HG
Audiovisual Special Effects Eqpt	8230.00	86531	10	1MY	Cabinet, Medical Unit	8010.12	86531	10	1RE
Badge, Puncher	3980.08	86533	03	3TY	Cabinet, Microfilm/Microfiche	3100.44	86531	10	1HG
Baler, Paper	2080.00	86532	10	2KY	Cabinet, Storage	3100.48	86531	10	1HY
Bar Code Reader	9500.00	86232	10	2DD	Cabinet, Tool and Parts	2150.00	86532	10	2LY
Bed, Medical Unit	8010.04	86531	10	1RE	Cabinet/Special Furniture, Film Process	8110.00	86531	10	1MD
Bender/Brake, Metal	2110.00	86532	10	2LB	Cafe Eqpt, Cabinet	8000.00	86531	10	1RB
Binding Machine	3500.04	86531	10	1HF	Cafe Eqpt, Cart	8000.02	86531	10	1RB
BMC Container Loader/Unloader	9700.00	86231	10	1DF	Cafe Eqpt, Cash Register	8000.04	86531	10	1RB
BMC Inbound-Outbound Tow Conveyor	9700.10	86231	10	1DF	Cafe Eqpt, Coffee Urn	8000.06	86531	10	1RB
BMC Parcel Sorting Induction Unit	9700.20	86231	10	1DF	Cafe Eqpt, Condiment Stand	8000.08	86531	10	1RB
BMC Parcel Sorting Machine	9700.22	86231	10	1DF	Cafe Eqpt, Counterline	8000.10	86531	10	1RB
BMC Process Control System	9700.30	86231	10	1DF	Cafe Eqpt, Dining Table	8000.12	86531	10	1RB
BMC Sack Shakeout Machine	9700.40	86231	10	1DF	Cafe Eqpt, Dishwasher	8000.14	86531	10	1RB
BMC Sack Sorter and Loader	9700.50	86231	10	1DF	Cafe Eqpt, Display Case	8000.16	86531	10	1RB

Cafe Eqpt, Disposal Unit	8000.18	86531	10	1RB	Channel Controller	3900.00	86533	05	3TA
Cafe Eqpt, Drink Dispenser	8000.20	86531	10	1RB	Charger, Battery-Vehicle	2120.00	86532	10	2LY
Cafe Eqpt, Freezer	8000.22	86531	10	1RB	Charger, Battery	6080.00	86532	10	2PY
Cafe Eqpt, Fryer	8000.24	86531	10	1RB	Cleaner, Air Conditioner	2130.00	86532	05	2LY
Cafe Eqpt, Grill	8000.26	86531	10	1RB	Cleaner, Boiler Tubes	2130.10	86532	05	2LY
Cafe Eqpt, Hood	8000.28	86531	10	1RB	Cleaner, Parts	2130.20	86532	10	2LY
Cafe Eqpt, Ice Dispenser	8000.32	86531	10	1RB	Cleaning Eqpt, VMF Maintenance	6050.00	86532	10	2PH
Cafe Eqpt, Ice Maker	8000.34	86531	10	1RB	Clock, Master Control and Misc	2220.20	86532	10	2MY
Cafe Eqpt, Ice Storage	8000.36	86531	10	1RB	Closed-circuit Television System	8300.00	86531	05	1MH
Cafe Eqpt, Kettle	8000.38	86531	10	1RB	Coil Cradle Eqpt	8510.00	86531	10	1QB
Cafe Eqpt, Kitchen Worktable	8000.40	86531	10	1RB	Collator	3500.06	86531	10	1HF
Cafe Eqpt, Microwave	8000.42	86531	10	1RB	Collator Binder	3500.08	86531	10	1HF
Cafe Eqpt, Misc Appliances	8000.48	86531	10	1RB	Compressor, Air	2120.10	86532	10	2LY
Cafe Eqpt, Misc Cooking and Heating	8000.44	86531	10	1RB	Computerized On-site Data Entry System	3990.40	86533	05	3TA
Cafe Eqpt, Misc Food Preparation Eqpt	8000.46	86531	10	1RB	Console, Control	2220.30	86532	10	2MY
Cafe Eqpt, Mixer	8000.50	86531	10	1RB	Container Trash, Scrap, Disposal	2080.20	86532	10	2KY
Cafe Eqpt, Oven	8000.52	86531	10	1RB	Control Console, Audiovisual	8230.10	86531	10	1MY
Cafe Eqpt, Rack/Shelving	8000.54	86531	10	1RB	Converter, Card/Paper/Tape Eqpt	3980.20	86533	04	3TY
Cafe Eqpt, Range	8000.56	86531	10	1RB	Conveyor	4200.00	86232	10	2FC
Cafe Eqpt, Refrigerator	8000.58	86531	10	1RB	Conveyor, Extendable	4200.10	86232	10	2FB
Cafe Eqpt, Serv-O-Lifts	8000.60	86531	10	1RB	Conveyor, Tractor	4200.30	86232	10	2FY
Cafe Eqpt, Sink	8000.62	86531	10	1RB	Cooler, Room	2200.10	86532	10	2MA
Cafe Eqpt, Slicer	8000.64	86531	10	1RB	Cooling System, ADP	3905.10	86533	05	3TY
Cafe Eqpt, Steam Table	8000.66	86531	10	1RB	Copying Machine	3500.10	86531	05	1HH
Cafe Eqpt, Tray Handling Eqpt	8000.68	86531	10	1RB	Couch	3000.30	86531	10	1KD
Cafe Eqpt, Warming Cabinet	8000.70	86531	10	1RB	Counter, Coin	7300.00	86433	05	3KA
Calculator	3200.00	86531	05	1HD	Counter, Currency	7300.10	86433	05	3KA
Calculator, Programmable	3200.10	86531	05	1HD	Counter, Paper	3980.16	86533	05	3TY
Camera	8100.00	86531	05	1MB	Counterline, Window Multipurpose	7100.10	86432	10	2JC
Camera Accessories	8100.60	86531	05	1MB	Crane	2140.00	86532	10	2LY
Camera, Document	8100.20	86531	05	1MB	Credenza	3000.40	86531	10	1KY
Camera, ID	8040.00	86531	10	1MB	Culling Machine	4000.00	86232	10	2DB
Camera, Microfilm	8100.30	86531	05	1MB	Cutter, ID Badge	8040.10	86531	10	1MB
Camera, Movie	8100.40	86531	05	1MB	Cutter, Metal	2110.02	86532	10	2LB
Camera, Video	8100.50	86531	05	1MH	Cutter, Paper	3500.12	86531	10	1HY
Canceler Flat	4010.40	86232	10	2FA	Data Entry System	3920.00	86533	03	3TA
Canceling/Facing Machine	4010.20	86232	10	2DC	Decollator	3980.24	86533	05	3TY
Canceling Machine	4010.30	86232	10	2FA	Delivery Bar Code Sorters (DBCS)	9500.20	86235	10	2DD
Canceling Machine, M-36	4010.00	86232	10	2DC	Delivery Receipt System, ADR	3990.10	86533	05	3TY
Canceling Machine, Mark II	4010.10	86232	10	2DC	Desk/Table, Lobby	7000.10	86431	10	1EY
Card Punch	3905.00	86533	05	3TA	Desk/Workstation	3000.50	86531	10	1KE
Card Reader	3905.04	86533	05	3TA	Dictating/Transcribing Eqpt	3210.00	86531	05	1HE
Card Sorter	3905.08	86533	05	3TA	Disk Pack	3900.10	86533	03	3TA
Cardboard Case-making Machine	8600.00	86531	10	1HY	Disk Storage Drive	3900.20	86533	05	3TA
Carpet Cleaning Machine	2040.00	86532	10	2KC	Dispenser, Label	4410.20	86233	10	3FY
Carrier, Cargo and Materials	4400.00	86233	10	3DG	Dispenser, Tape	4420.00	86233	10	3FB
Carrier, Personnel	4400.10	86233	10	3DG	Dispenser, Ticket Machine	7000.20	86431	10	1EY
Carrier, Sequence Bar Code Sorter (CSBCS)	9500.10	86232	10	2DD	Diverter Edger Feeder Attachment	4020.00	86232	05	2DH
Cart, Medical Unit	8010.16	86531	10	1RE	Dockboard/Dockramp, Portable	2300.00	86233	10	3DF
Cart, Office Mailroom	3300.00	86531	10	1HY	Dolly, Vehicle Towing	6020.00	86532	10	2PD
Cart/Truck, Custodial	2080.10	86532	10	2KY	Drafting Eqpt	3300.10	86531	10	1HY
Chair	3000.20	86531	05	1KC	Drafting Table	3300.12	86531	10	1HY
Chair, Medical Treatment	8010.20	86531	10	1RE	Drill	2110.04	86532	10	2LB
Changer, Coin	7200.00	86433	10	3KC	Drill Press	2110.06	86532	10	2LB
Changer, Currency	7200.10	86433	10	3KC	Drill/Punch, Paper	3500.14	86531	10	1HY
Changer, Currency/Coin	7200.20	86433	10	3KC	Dryer, Film Processing	8110.10	86531	10	1MD

Dual Pass Rough Cull System (DPRCS)	4000.10	86232	10	2DB	Imprinting Machine	3250.00	86531	10	1HY
Dumper, Hamper	4200.50	86233	10	3DB	Inclined Feeder Assembly	4020.30	86232	05	2DH
Duplicating Eqpt, Offset	3500.16	86531	10	1HF	Infrared Viewer	2100.02	86532	10	2LA
Duplicating Eqpt, Plate-maker Unit	3500.18	86531	05	1HF	Inserting Eqpt	3500.36	86531	10	1HY
Duplicating Eqpt, Stencil Unit	3500.20	86531	10	1HF	Inspection Service Crime Laboratory Eqpt	3700.12	86531	10	1NY
Duplicating Eqpt, Transparency Unit	3500.22	86531	10	1HF	Installation Cost, Fixed Mechanization	9999.99	86231	10	1DF
Duplicating Eqpt, Vartyper	3500.24	86531	10	1HF	Installation Cost, Nonfixed Mechanization	9999.98	86232	10	2GG
Duplicating/Printing, Misc Eqpt	3500.90	86531	10	1HY	Integrated Retail Terminal (IRT)	7120.20	86432	07	2JG
Duplicator, Audio	8220.10	86531	10	1MF	Intercom, Closed-circuit Television	8300.10	86531	05	1MH
Duplicator, Microfilm/Microfiche	3995.00	86531	10	1HM	Jack	6020.10	86532	10	2PD
Dynamometer, Vehicle	6090.10	86532	10	2PY	Jogger, Paper	3500.38	86531	10	1HY
Edger Feeder	4020.10	86232	05	2DH	Jointer, Wood	2110.18	86532	10	2LB
Edger Stacker	4020.20	86232	05	2DH	Key Duplicating/Cutting Machine	2120.20	86532	10	2LY
Electrocardiograph	8010.24	86531	10	1RE	Key Manufacturing Machine, Mail Eqpt Shop	8500.10	86531	07	1QA
Embossing Machine	3500.26	86531	10	1HY	Label Printing System	4410.00	86232	10	2FD
Engine Maintenance Eqpt	6010.10	86532	10	2PC	Lacer, Belt	2120.30	86532	10	2LY
Enlarger, Film Processing	8110.20	86531	10	1MD	Ladder, Safety Platform	2140.20	86532	10	2LY
Envelope Stuffer/Sealer System	4440.00	86233	10	3FY	Laminator, ID Badge	8040.20	86531	10	1MB
EPROM Programmer Device	3980.26	86533	03	3TY	Lathe	2110.20	86532	10	2LB
Feeder, Addressing Eqpt	3500.28	86531	05	1HF	Lawn and Yard, Misc Eqpt	2050.90	86532	05	2KY
Feeder, Collator Eqpt	3500.30	86531	10	1HF	Lectern	8210.10	86531	10	1MC
Feeder, Label Printer	4410.30	86233	10	3FY	Lens	8100.70	86531	05	1MB
Feeder, Photocopy Eqpt	3500.32	86531	05	1HH	Letter Sorting Machine, Multiposition(MPLSM)	9100.00	86232	10	2DD
File, Automated System Unit	3100.20	86531	10	1HG	Letter Sorting Machine, Single Position (MPLSM)	9100.10	86232	10	2DD
File, Rotary	3100.24	86531	10	1HG	Lettering Eqpt and Systems	3400.00	86531	10	1HY
File, Shelving	3100.28	86531	10	1HG	Lift, Battery	2140.25	86532	10	2LY
Film Processing, Misc Eqpt	8110.90	86531	10	1MD	Lift, Table	2140.30	86532	10	2LY
Finishing Eqpt, Metal	2110.08	86532	10	2LB	Lift, Vehicle	6020.30	86532	10	2PD
Fire, Rescue, and Safety Eqpt	8700.00	86531	10	1RY	Lift Platform, Cleaning/Maintenance	2140.40	86532	10	2LY
Firearms	3700.38	86531	10	1NY	Light, Medical Unit	8010.32	86531	10	1RE
Fixed Mechanization Memory Container System	9000.10	86231	10	1DF	Lights and Lighting, Specialized	8230.20	86531	10	1MY
Flats Sorter Bin Unit	9200.10	86232	10	2DK	Loose Mail Conveyor System	9000.20	86231	10	1DF
Flats Sorter Culling Unit	9200.20	86232	10	2DK	LSM-Electronic Sort Processor	9100.34	86232	10	2DD
Flats Sorter Extractor Unit	9200.30	86232	10	2DK	LSM-Expanded ZIP Retrofit	9100.91	86232	10	2DD
Flats Sorter Feed Unit	9200.40	86232	10	2DK	LSM-EZR Maintenance Terminal	9100.92	86232	07	2DD
Flats Sorter Machine	9200.00	86232	10	2DK	LSM-Tray Conveyor System	9100.20	86232	10	2DD
Folder, Paper	3500.34	86531	10	1HY	LSM-Vacuum System	9100.94	86232	10	2DD
Forming Machine, Carton or Trays	8600.10	86531	10	1HY	LSM-ZIP Mail Translator	9100.30	86232	10	2DD
Forming Machine, Metal	2110.10	86532	10	2LB	Magnetic Tape Unit	3900.30	86533	05	3TA
Generator	2210.10	86532	10	2MC	Magnetic Tape Unit, Automated	3900.34	86533	05	3TA
Generator, Signal	2100.00	86532	10	2LA	Mail Eqpt Shop, Misc Eqpt	8500.90	86531	10	1QA
Graphics System	3970.00	86533	03	3TA	Mail Preparation System	9000.30	86231	10	1DF
Graphics System, Controller	3970.10	86533	03	3TA	Mailbag Facility, Misc Eqpt	8510.90	86531	10	1QB
Graphics System, Display Unit	3970.20	86533	03	3TA	Maintenance, Misc Tools and Eqpt	2120.90	86532	10	2LY
Graphics System, Plotter	3970.30	86533	03	3TA	Medical Instrument/Diagnostic Eqpt	8010.36	86531	10	1RE
Grinder	2110.12	86532	10	2LB	Medical Treatment Eqpt and Devices	8010.40	86531	10	1RE
Grinder, Valve	6010.20	86532	10	2PC	Memory Storage Unit	3900.40	86533	05	3TA
Grommet Machine	8500.00	86531	10	1QA	Memory Storage, Controller	3900.44	86533	05	3TA
Hammer Machine, Metal	2110.14	86532	10	2LB	Metal Detector	3700.16	86531	10	1NY
Heat Treat Eqpt	2110.16	86532	10	2LB	Microcomputer System	3950.00	86533	03	3TA
Heater, Portable	2220.40	86532	10	2MY					
Hoist	2140.10	86532	10	2LY					
Humidifier	2200.20	86532	10	2MY					
HVAC Energy Management System	3990.20	86533	05	3TY					
Hydrocollator	8010.28	86531	10	1RE					

Micro Controller	3950.10	86533	03	3TA	Processor, Mainframe	3900.60	86533	05	3TA
Micro CRT/VDT	3950.20	86533	03	3TA	Processor, Mainframe Controller	3900.64	86533	05	3TA
Micro Data Entry/Capture System	3920.10	86533	03	3TB	Processor, Operator Console/Station	3900.68	86533	05	3TA
Microdisk Drive	3950.30	86533	03	3TA	Projector Accessories and Misc Eqpt	8200.90	86531	05	1ME
Micro Keyboard	3950.40	86533	03	3TA	Projector, Computer Image	8200.00	86531	05	1ME
Micro Memory Storage Unit	3950.50	86533	03	3TA	Projector, Movie	8200.10	86531	05	1ME
Micro Printer	3950.80	86533	03	3TA	Projector, Opaque	8200.20	86531	05	1ME
Micro Printer/Keyboard	3950.82	86533	03	3TA	Projector, Overhead	8200.30	86531	05	1ME
Microprocessor	3950.60	86533	03	3TA	Projector, Slide	8200.40	86531	05	1ME
Micro Tape Drive	3950.70	86533	03	3TA	Projector, Strip Film	8200.50	86531	05	1ME
Microfilmer, Computer Output	3995.10	86533	10	3TY	Projector, Television	8200.60	86531	05	1ME
Microphone	8210.20	86531	10	1MC	Public Address/Intercom/Music System	3620.00	86531	10	1SC
Microscope	3700.20	86531	10	1NY	Puller Eqpt	6090.20	86532	10	2PY
Milling Machine	2110.22	86532	10	2LB	Pump, Misc Portable	2220.50	86532	10	2MY
Minicomputer Processor	3940.10	86533	05	3TA	Pump, Servicing/Dispensing	6030.00	86532	10	2PE
Minicomputer System	3940.00	86533	05	3TA	Rack, Maintenance	2150.10	86532	10	2LY
Mixer, Concrete	2120.40	86532	10	2LY	Rack, Office, Misc	3000.60	86531	10	1KY
Mobile Home/Post Office	2400.00	86532	10	2MY	Rack, Tray Storage	4210.00	86232	10	2FY
Modem	3910.00	86533	04	3TB	Radio, Base Station	3610.00	86531	10	1SB
Modification, Mark II Control	4010.94	86232	05	2DC	Radio, Duplexor	3610.04	86531	10	1SB
Monitor, Television	8300.20	86531	05	1MH	Radio, Encoder	3610.08	86531	10	1SB
Monorail Sorting System	9000.35	86231	10	1DF	Radio, Frequency Filter	3610.12	86531	10	1SB
Mower, Lawn	2050.00	86532	05	2KY	Radio, Inserter	3610.16	86531	05	1SB
Multibelt Sorting System	9000.40	86231	10	1DF	Radio, Mobile Telephone Units	3610.20	86531	05	1SB
Multicommodity Vending Machine	7210.10	86433	10	3KJ	Radio, Other Misc Types	3610.90	86531	05	1SB
Multiplexor	3910.10	86533	04	3TB	Radio, Pager	3610.24	86531	05	1SB
Multislide	9000.50	86231	10	1DF	Radio, Remote Control Unit or Base	3610.28	86531	10	1SB
Notcher	2110.26	86532	10	2LB	Radio, Repeater	3610.32	86531	10	1SB
Office Furniture, Misc	3000.90	86531	10	1KY	Radio, Signal Booster	3610.36	86531	10	1SB
Office Machines and Eqpt, Misc	3250.90	86531	10	1HY	Radio, System Control Console	3610.40	86531	10	1SB
Opener, Envelope	3250.04	86531	10	1HY	Radio, Tower	3610.44	86531	10	1SB
Packer/Compactor, Trash, Disposal	2080.30	86532	10	2KY	Radio, Two-Way Portable	3610.48	86531	05	1SB
Paint Shop Eqpt, Misc	2160.00	86532	10	2LY	Radio, Two-Way Vehicle	3610.52	86531	05	1SB
Pallet Unloader	9000.60	86231	10	1DF	Radio, Voting System	3610.56	86531	05	1SB
Parcel Sorting Machine	9300.00	86231	10	1DF	Reader/Printer, Microfiche	3995.30	86531	10	1HM
Perforator	3500.40	86531	10	1HY	Reader/Printer, Microfilm	3995.50	86531	10	1HM
Photographic Image ID Kit	3700.24	86531	10	1NY	Reader/Puncher, Paper Tape	3980.28	86533	04	3TY
Phototype Composing Machine	3500.42	86531	05	1HF	Reader, Microfiche	3995.20	86531	10	1HM
Pipe Bending/Cutting/Threading Eqpt	2110.28	86532	10	2LB	Reader, Microfilm	3995.40	86531	10	1HM
Planer	2110.30	86532	10	2LB	Reader, Optical Character	9600.00	86232	10	2DD
Platform Elevator/Lift, Portable	2300.10	86233	10	3DF	Reader, Optical Character, OCR/CS	9600.10	86232	10	2DD
Polisher, Floor	2010.10	86532	10	2KB	Recorder, Computer Image	3980.32	86533	03	3TY
Polisher/Scrubber, Floor	2010.00	86532	10	2KB	Recorder, Plotting	2100.04	86532	10	2LA
Polygraph	3700.28	86531	10	1NY	Remote Bar Coding Image Processing System	9600.20	86235	10	2DD
Postage Meters	7110.00	86432	10	2JE	Register Dispatch System, ADSRM	3990.30	86533	05	3TY
Power Conditioner	3905.12	86533	07	3TY	Resuscitator Manikin	8010.44	86531	10	1RE
Power Converter	3905.14	86533	05	3TY	Rewrap or Patch-Up Eqpt	4420.10	86233	10	3FB
Power Protection/Alarm Unit	3905.18	86533	07	3TY	Riveting Eqpt	2110.36	86532	10	2LB
Power Supply	2210.20	86532	10	2MC	Sack Sorting Machine	9400.00	86231	10	1DF
Power Unit	3905.16	86533	05	3TY	Safe	7310.00	86531	10	1ND
PP Distribution Ring	9000.70	86232	10	2DF	Safe, Vault Shell	7310.10	86531	10	1ND
Press, Arbor/Power	2110.32	86532	10	2LB	Sander	2110.38	86532	10	2LB
Printer	3900.50	86533	05	3TA					
Printer, Address Label	4410.10	86233	10	3FY					
Printer, Film Processing	8110.30	86531	10	1MD					
Printer, Sign and Showcard	3400.10	86531	10	1HY					
Printing System	3900.54	86533	05	3TA					
Processor, Film	8110.40	86531	10	1MD					

Saws and Saw Eqpt	2110.40	86532	10	2LB	Stripe Painting Eqpt	2160.20	86532	05	2LY
Scale, Floor or Platform	4430.00	86233	10	3FY	Surveillance, Misc Eqpt	3700.44	86531	10	1NY
Scale, Misc	7120.00	86432	10	2JF	Surveying Eqpt	3300.20	86531	10	1HY
Scale, Programmable/Electronic	7120.10	86432	05	2JF	Sweeper Accessory/Attachment	2030.30	86532	10	2KE
Scale, Remote Console/Indicator	4430.10	86233	10	3FY	Sweeper, Lawn	2030.00	86532	10	2KE
Scanner, Controller	3925.00	86533	03	3TC	Sweeper, Manual	2030.10	86532	10	2KE
Scanner, Fixed Unit	3925.10	86533	03	3TC	Sweeper, Powered	2030.20	86532	10	2KE
Scanner, Portable Unit	3925.20	86533	03	3TC	Switching Unit	3900.70	86533	05	3TA
Scooter	4400.20	86233	05	3DG	Table	3000.70	86531	10	1KG
Scope, Covert Vehicular	3700.32	86531	10	1NY	Table/Couch, Medical Exam/Treatment	8010.60	86531	10	1RE
Scoring, Test, Machine	8030.00	86531	10	1RC	Tank, Gas	6030.20	86532	10	2PE
Screen, Projection	8200.70	86531	05	1ME	Tank, Mopping	2010.30	86532	10	2KC
Screw Machine	8500.20	86531	10	1QA	Tank, Oil	6030.30	86532	10	2PE
Scrubbing Machine	2010.20	86532	10	2KC	Telecommunications Unit	3910.20	86533	04	3TB
Sealer, Envelope	3250.12	86531	10	1HY	Telephone System	3600.10	86531	10	1SA
Sealer, Heat Type	8510.10	86531	10	1QB	Telephone System, Misc Eqpt	3600.90	86531	10	1SA
Security Container With Cabinet	7310.20	86531	10	1ND	Television	8300.30	86531	05	1MH
Servicing/Dispensing Eqpt	6030.10	86532	10	2PE	Television Station Equipment	3630.00	86531	10	1SB
Sewer Maintenance Eqpt	2070.00	86532	10	2KY	Terminal, Badge Reader	3930.00	86533	03	3TB
Sewing Machine	8510.20	86531	10	1QB	Terminal, CRT/VDT	3930.10	86533	03	3TB
Shaping/Forming Machine	8500.30	86531	10	1QA	Terminal, Point of Sale	3930.30	86533	03	3TB
Shear, Metal	2110.42	86532	10	2LB	Terminal, Scale Input	3930.40	86533	03	3TB
Shed, Storage	2400.20	86532	10	2MY	Terminal, Telecopier	3930.60	86533	03	3TB
Shelter, Dock or Yard Type	2400.30	86532	10	2MY	Terminal, Teletype	3930.50	86533	03	3TB
Shelter, Security Guard	2400.40	86532	10	2MY	Terminal, Transaction	3930.20	86533	03	3TB
Shooting Range Eqpt	3700.36	86531	10	1NY	Test Eqpt, Vehicle Electrical Systems	6010.30	86532	10	2PC
Showcase/Display Case	7000.30	86431	10	1EY	Test Eqpt, Vehicle Exhaust	6010.50	86532	10	2PC
Shower/Wash, Medical or Safety	8010.48	86531	10	1RE	Test Eqpt, Vehicle Tune-Up/Diagnosis	6010.40	86532	10	2PC
Shredder	3250.16	86531	10	1HY	Testing/Measuring Eqpt, Air	2100.06	86532	10	2LA
Shredder and Pulper	3250.20	86531	10	1HY	Testing/Measuring Eqpt, Chemical	2100.08	86532	10	2LA
Shredder Sound Enclosure	3250.24	86531	10	1HY	Testing/Measuring Eqpt, Distance	2100.10	86532	10	2LA
Sign, Indoor/Outdoor	2220.60	86532	10	2MY	Testing/Measuring Eqpt, Electrical	2100.12	86532	10	2LA
Sign Shop, Misc Eqpt	3400.20	86531	10	1HY	Testing/Measuring Eqpt, Fuel	2100.14	86532	10	2LA
Signer, Check or Other	3250.28	86531	10	1HY	Testing/Measuring Eqpt, Laboratory	2100.16	86532	10	2LA
Sink, Film Processing	8110.50	86531	10	1MD	Testing/Measuring Eqpt, Light	2100.18	86532	10	2LA
Small Parcel/Bundle Sorter System	9300.40	86232	10	2DL	Testing/Measuring Eqpt, Optical	2100.20	86532	10	2LA
Small Parcel/Roll Sorter System	9300.50	86231	10	1DF	Testing/Measuring Eqpt, Oscilloscope	2100.22	86532	10	2LA
Snow Blower	2060.00	86532	05	2KD	Testing/Measuring Eqpt, Physical	2100.24	86532	10	2LA
Snow/Ice Removal/Control, Misc Eqpt	2060.90	86532	10	2KD	Testing/Measuring Eqpt, Sound	2100.26	86532	10	2LA
Soldering/Desoldering Eqpt	2120.50	86532	10	2LY	Testing/Measuring Eqpt, Speed	2100.28	86532	10	2LA
Sorter, Coin	7300.40	86433	10	3KA	Testing/Measuring Eqpt, Standard Sets	2100.32	86532	10	2LA
Sorter/Changer, Coin	7300.20	86433	10	3KA	Testing/Measuring Eqpt, Temperature	2100.30	86532	10	2LA
Sorter/Counter, Coin	7300.30	86433	10	3KA	Testing/Measuring Eqpt, Television Station	2100.40	86532	10	2LA
Speaker System	8210.30	86531	10	1MC	Testing/Measuring Eqpt, Water/Moisture	2100.34	86532	10	2LA
Sprayer, Paint	2160.10	86532	10	2LY	Tickometer	3250.32	86531	10	1HY
Spreader, Ice and Snow Control	2060.10	86532	10	2KD	Tire Maintenance Eqpt	6040.00	86532	10	2PG
Self-Service Postal Center (SSPC)	7210.30	86433	10	3KB	Toilet, Portable	2400.50	86532	10	2MY
Stacker Unit	4020.40	86232	10	2DH	Tooling Machine, Electric Discharge	8500.40	86531	10	1QA
Stamp Vending Machine	7210.20	86433	10	3KJ					
Stand, Vehicle Maintenance	6020.40	86532	10	2PD					
Stapler	3500.44	86531	10	1HY					
Starter, Vehicle	6090.30	86532	10	2PY					
Sterilizer	8010.52	86531	10	1RE					
Stitching Machine, Book	3500.46	86531	10	1HY					
Strapping Machine, Nonmetallic	4220.00	86232	10	2FF					
Strapping Machine, Steel	2120.60	86532	10	2LY					
Strapping System	4220.10	86232	10	2FF					

Tractor, Attachments and Accessories	4230.00	86233	05	3DJ	Turnstile	7000.40	86431	10	1EY
Tractor, Industrial and Farm Type	4230.10	86233	10	3DJ	Tying Machine	4220.20	86232	10	2FF
Tractor, Lawn and Yard Type	2050.10	86532	05	2KJ	Typewriter, Electric	3220.00	86531	10	1HK
Tractor, Tow/Tug/Warehouse	4230.20	86233	05	3DJ	Typewriter, Extended Capabilities	3220.10	86531	10	1HK
Tractor, With Autoguidance System	4230.30	86233	10	3DJ	Upholstery Cleaning Machine	2040.10	86532	10	2KC
Tractor and Mower Accessories	2050.11	86532	05	2KY	Vacuum Cleaner	2020.00	86532	05	2KF
Trailer, Utility/Storage Building	2400.10	86532	10	2MY	Vault Door/Entrance	7310.30	86531	10	1NE
Trainer, Basic Electricity	8030.02	86531	10	1RC	Vending Console	7210.40	86433	10	3KJ
Trainer, Basic Hydraulic/Pneumatics	8030.04	86531	10	1RC	Vibrator Hopper Assembly	4020.50	86232	05	2DH
Trainer, Computer Electronics	8030.08	86531	10	1RC	Video, Player/Recorder	8300.40	86531	05	1MF
Trainer, Driver Training System	8030.12	86531	10	1RC	Video Special Effects Eqpt	8300.50	86531	05	1MH
Trainer, Electrical Systems	8030.16	86531	10	1RC	Viewer, Slide/Strip/Movie	8200.80	86531	05	1ME
Trainer, Elevator Maintenance	8030.20	86531	10	1RC	Vise	2120.70	86532	10	2LY
Trainer, Keyboard	8030.24	86531	10	1RC	Vision Testing/Measuring Device	8010.64	86531	10	1RE
Trainer, Keyboard Parcel Sack	8030.28	86531	10	1RC	Visual Presentation Eqpt	8230.30	86531	10	1MY
Trainer, LSM Training Console	8030.32	86531	10	1RC	VMF Maintenance Eqpt, Misc	6090.90	86532	10	2PY
Trainer, Misc	8030.44	86531	10	1RC	Washer, Clothes	2040.20	86532	05	2KC
Trainer, Misc HVAC and Building Systems	8030.36	86531	10	1RC	Washer, Vehicle	6050.10	86532	10	2PH
Trainer, Misc Vehicle Systems	8030.40	86531	10	1RC	Washing/Cleaning Machine	2040.30	86532	10	2KC
Trainer, Parcel or Sack Sorter	8030.48	86531	10	1RC	Waxer, Floor	2010.40	86532	10	2KB
Training System, Audiovisual	8030.52	86531	10	1RC	Welding Eqpt	2120.80	86532	10	2LY
Training Visual Aid	8030.56	86531	10	1RC	Wheel Raiser	2300.20	86233	10	3DF
Transformer, Portable	2210.30	86532	10	2MC	Wheel/Suspension Maintenance Eqpt	6060.00	86532	10	2PJ
Transmitter, Surveillance	3700.40	86531	10	1NY	Word Processing, Console	3960.40	86533	03	3TW
Tray Transport System	9000.80	86231	10	1DF	Word Processing, Controller	3960.30	86533	03	3TW
Truck, Forklift	4230.40	86233	10	3DJ	Word Processing, Feeder	3960.70	86533	03	3TW
Truck, Forklift/Tow, Vehicle Maintenance	6020.50	86532	10	2PD	Word Processing, Keyboard	3960.60	86533	03	3TW
Truck, Hand Lift/Pallet	4230.50	86233	10	3DJ	Word Processing, Memory Unit	3960.20	86533	03	3TW
Truck, Lift Specialized System	4230.60	86233	10	3DJ	Word Processing, Printer	3960.50	86533	03	3TW
Truck, Reel	3980.36	86533	03	3TY	Word Processing, Terminal	3960.10	86533	03	3TW
					Word Processing System	3960.00	86533	03	3TW
					X-ray Eqpt, Medical Unit	8010.68	86531	10	1RE
					X-ray Eqpt, Misc	3700.48	86531	10	1NY

32 PCN Sequence Listing

Prop. Code	Cmt. Acct.	Serv. Life	PCN Description	BIC	Prop. Code	Cmt. Acct.	Serv. Life	PCN Description	BIC
2010.00	86532	10	Polisher/Scrubber, Floor	2KB	2110.00	86532	10	Bender/Brake, Metal	2LB
2010.10	86532	10	Polisher, Floor	2KB	2110.02	86532	10	Cutter, Metal	2LB
2010.20	86532	10	Scrubbing Machine	2KC	2110.04	86532	10	Drill	2LB
2010.30	86532	10	Tank, Mopping	2KC	2110.06	86532	10	Drill Press	2LB
2010.40	86532	10	Waxer, Floor	2KB	2110.08	86532	10	Finishing Eqpt, Metal	2LB
2020.00	86532	05	Vacuum Cleaner	2KF	2110.10	86532	10	Forming Machine, Metal	2LB
2030.00	86532	10	Sweeper, Lawn	2KE	2110.12	86532	10	Grinder	2LB
2030.10	86532	10	Sweeper, Manual	2KE	2110.14	86532	10	Hammer Machine, Metal	2LB
2030.20	86532	10	Sweeper, Powered	2KE	2110.16	86532	10	Heat Treat Eqpt	2LB
2030.30	86532	10	Sweeper Accessory/Attachment	2KE	2110.18	86532	10	Jointer, Wood	2LB
2040.00	86532	10	Carpet Cleaning Machine	2KC	2110.20	86532	10	Lathe	2LB
2040.10	86532	10	Upholstery Cleaning Machine	2KC	2110.22	86532	10	Milling Machine	2LB
2040.20	86532	05	Washer, Clothes	2KC	2110.26	86532	10	Notcher	2LB
2040.30	86532	10	Washing/Cleaning Machine	2KC	2110.28	86532	10	Pipe Bending/Cutting/Threading Eqpt	2LB
2050.00	86532	05	Mower, Lawn	2KY	2110.30	86532	10	Planer	2LB
2050.10	86532	05	Tractor, Lawn and Yard Type	2KJ	2110.32	86532	10	Press, Arbor/Power	2LB
2050.11	86532	05	Tractor and Mower Accessories	2KY	2110.36	86532	10	Riveting Eqpt	2LB
2050.90	86532	05	Lawn and Yard, Misc Eqpt	2KY	2110.38	86532	10	Sander	2LB
2060.00	86532	05	Snow Blower	2KD	2110.40	86532	10	Saws and Saw Eqpt	2LB
2060.10	86532	10	Spreader, Ice and Snow Control	2KD	2110.42	86532	10	Shear, Metal	2LB
2060.90	86532	10	Snow/Ice Removal/Control, Misc Eqpt	2KD	2120.00	86532	10	Charger, Battery	2LY
2070.00	86532	10	Sewer Maintenance Eqpt	2KY	2120.10	86532	10	Compressor, Air	2LY
2080.00	86532	10	Baler, Paper	2KY	2120.20	86532	10	Key Duplicating/Cutting Machine	2LY
2080.10	86532	10	Cart/Truck, Custodial	2KY	2120.30	86532	10	Lacer, Belt	2LY
2080.20	86532	10	Container Trash, Scrap, Disposal	2KY	2120.40	86532	10	Mixer, Concrete	2LY
2080.30	86532	10	Packer/Compactor, Trash, Disposal	2KY	2120.50	86532	10	Soldering/Desoldering Eqpt	2LY
2100.00	86532	10	Generator, Signal	2LA	2120.60	86532	10	Strapping Machine, Steel	2LY
2100.02	86532	10	Infrared Viewer	2LA	2120.70	86532	10	Vise	2LY
2100.04	86532	10	Recorder, Plotting	2LA	2120.80	86532	10	Welding Eqpt	2LY
2100.06	86532	10	Testing/Measuring Eqpt, Air	2LA	2120.90	86532	10	Maintenance, Misc Tools and Eqpt	2LY
2100.08	86532	10	Testing/Measuring Eqpt, Chemical	2LA	2130.00	86532	05	Cleaner, Air Conditioner	2LY
2100.10	86532	10	Testing/Measuring Eqpt, Distance	2LA	2130.10	86532	05	Cleaner, Boiler Tubes	2LY
2100.12	86532	10	Testing/Measuring Eqpt, Electrical	2LA	2130.20	86532	10	Cleaner, Parts	2LY
2100.14	86532	10	Testing/Measuring Eqpt, Fuel	2LA	2140.00	86532	10	Crane	2LY
2100.16	86532	10	Testing/Measuring Eqpt, Laboratory	2LA	2140.10	86532	10	Hoist	2LY
2100.18	86532	10	Testing/Measuring Eqpt, Light	2LA	2140.20	86532	10	Ladder, Safety Platform	2LY
2100.20	86532	10	Testing/Measuring Eqpt, Optical	2LA	2140.25	86532	10	Lift, Battery	2LY
2100.22	86532	10	Testing/Measuring Eqpt, Oscilloscope	2LA	2140.30	86532	10	Lift, Table	2LY
2100.24	86532	10	Testing/Measuring Eqpt, Physical	2LA	2140.40	86532	10	Lift Platform, Cleaning/Maintenance	2LY
2100.26	86532	10	Testing/Measuring Eqpt, Sound	2LA	2150.00	86532	10	Cabinet, Tool and Parts	2LY
2100.28	86532	10	Testing/Measuring Eqpt, Speed	2LA	2150.10	86532	10	Rack, Maintenance	2LY
2100.30	86532	10	Testing/Measuring Eqpt, Temperature	2LA	2160.00	86532	10	Paint Shop Eqpt, Misc	2LY
2100.32	86532	10	Testing/Measuring Eqpt, Standard Sets	2LA	2160.10	86532	10	Sprayer, Paint	2LY
2100.34	86532	10	Testing/Measuring Eqpt, Water/Moisture	2LA	2160.20	86532	05	Stripe Painting Eqpt	2LY
2100.40	86532	10	Testing/Measuring Eqpt, Television Station	2LA	2200.00	86532	10	Air Conditioner	2MA
					2200.10	86532	10	Cooler, Room	2MA
					2200.20	86532	10	Humidifier	2MY
					2210.00	86532	10	Alternator, Power Plant	2MC
					2210.10	86532	10	Generator	2MC
					2210.20	86532	10	Power Supply	2MC
					2210.30	86532	10	Transformer, Portable	2MC

2220.00	86532	10	Air Curtain, Entrance/Exit Door	2MY	3400.10	86531	10	Printer, Sign and Showcard	1HY
2220.10	86532	10	Board, Directory, Control or Misc	2MY	3400.20	86531	10	Sign Shop, Misc Eqpt	1HY
2220.20	86532	10	Clock, Master Control and Misc	2MY	3500.00	86531	05	Addressing Machine	1HC
2220.30	86532	10	Console, Control	2MY	3500.04	86531	10	Binding Machine	1HF
2220.40	86532	10	Heater, Portable	2MY	3500.06	86531	10	Collator	1HF
2220.50	86532	10	Pump, Misc Portable	2MY	3500.08	86531	10	Collator Binder	1HF
2220.60	86532	10	Sign, Indoor/Outdoor	2MY	3500.10	86531	05	Copying Machine	1HH
2220.90	86532	10	Building Eqpt, Misc	2MY	3500.12	86531	10	Cutter, Paper	1HY
2300.00	86233	10	Dockboard/Dockramp, Portable	3DF	3500.14	86531	10	Drill/Punch, Paper	1HY
2300.10	86233	10	Platform Elevator/Lift, Portable	3DF	3500.16	86531	10	Duplicating Eqpt, Offset	1HF
2300.20	86233	10	Wheel Raiser	3DF	3500.18	86531	05	Duplicating Eqpt, Plate-maker Unit	1HF
2400.00	86532	10	Mobile Home/Post Office	2MY	3500.20	86531	10	Duplicating Eqpt, Stencil Unit	1HF
2400.10	86532	10	Trailer, Utility/Storage Building	2MY	3500.22	86531	10	Duplicating Eqpt, Transparency Unit	1HF
2400.20	86532	10	Shed, Storage	2MY					
2400.30	86532	10	Shelter, Dock or Yard Type	2MY	3500.24	86531	10	Duplicating Eqpt, Varityper	1HF
2400.40	86532	10	Shelter, Security Guard	2MY	3500.26	86531	10	Embossing Machine	1HY
2400.50	86532	10	Toilet, Portable	2MY	3500.28	86531	05	Feeder, Addressing Eqpt	1HF
3000.00	86531	10	Art/Statuary/Decorator Items	1KY	3500.30	86531	10	Feeder, Collator Eqpt	1HF
3000.10	86531	10	Bookcase	1KA	3500.32	86531	05	Feeder, Photocopy Eqpt	1HH
3000.20	86531	05	Chair	1KC	3500.34	86531	10	Folder, Paper	1HY
3000.30	86531	10	Couch	1KD	3500.36	86531	10	Inserting Eqpt	1HY
3000.40	86531	10	Credenza	1KY	3500.38	86531	10	Jogger, Paper	1HY
3000.50	86531	10	Desk/Workstation	1KE	3500.40	86531	10	Perforator	1HY
3000.60	86531	10	Rack, Office, Misc	1KY	3500.42	86531	05	Phototype Composing Machine	1HF
3000.70	86531	10	Table	1KG	3500.44	86531	10	Stapler	1HY
3000.90	86531	10	Office Furniture, Misc	1KY	3500.46	86531	10	Stitching Machine, Book	1HY
3100.00	86531	10	Cabinet, File	1HG	3500.90	86531	10	Duplicating/Printing, Misc Eqpt	1HY
3100.04	86531	10	Cabinet, File Card	1HG	3600.00	86531	10	Answering/Recording Unit, Telephone System	1SA
3100.08	86531	10	Cabinet, File, Lateral	1HG					
3100.12	86531	10	Cabinet, File, Security	1HG	3600.10	86531	10	Telephone System	1SA
3100.16	86531	10	Cabinet, File/Stand, Visible Records	1HG	3600.90	86531	10	Telephone System, Misc Eqpt	1SA
					3610.00	86531	10	Radio, Base Station	1SB
3100.20	86531	10	File, Automated System Unit	1HG	3610.04	86531	10	Radio, Duplexor	1SB
3100.24	86531	10	File, Rotary	1HG	3610.08	86531	10	Radio, Encoder	1SB
3100.28	86531	10	File, Shelving	1HG	3610.12	86531	10	Radio, Frequency Filter	1SB
3100.32	86531	10	Cabinet, ADP	1HY	3610.16	86531	05	Radio, Inserter	1SB
3100.36	86531	10	Cabinet, Map/Plan	1HG	3610.20	86531	05	Radio, Mobile Telephone Units	1SB
3100.40	86531	10	Cabinet, Laboratory	1HY	3610.24	86531	05	Radio, Pager	1SB
3100.44	86531	10	Cabinet, Microfilm/Microfiche	1HG	3610.28	86531	10	Radio, Remote Control Unit or Base	1SB
3100.48	86531	10	Cabinet, Storage	1HY					
3200.00	86531	05	Calculator	1HD	3610.32	86531	10	Radio, Repeater	1SB
3200.10	86531	05	Calculator, Programmable	1HD	3610.36	86531	10	Radio, Signal Booster	1SB
3210.00	86531	05	Dictating/Transcribing Eqpt	1HE	3610.40	86531	10	Radio, System Control Console	1SB
3220.00	86531	10	Typewriter, Electric	1HK	3610.44	86531	10	Radio, Tower	1SB
3220.10	86531	10	Typewriter, Extended Capabilities	1HK	3610.48	86531	05	Radio, Two-Way Portable	1SB
3250.00	86531	10	Imprinting Machine	1HY	3610.52	86531	05	Radio, Two-Way Vehicle	1SB
3250.04	86531	10	Opener, Envelope	1HY	3610.56	86531	05	Radio, Voting System	1SB
3250.12	86531	10	Sealer, Envelope	1HY	3610.90	86531	05	Radio, Other Misc Types	1SB
3250.16	86531	10	Shredder	1HY	3620.00	86531	10	Public Address/Intercom/Music System	1SC
3250.20	86531	10	Shredder and Pulper	1HY					
3250.24	86531	10	Shredder Sound Enclosure	1HY	3630.00	86531	10	Television Station Equipment	1SB
3250.28	86531	10	Signer, Check or Other	1HY	3700.00	86531	10	Access Control System	1NY
3250.32	86531	10	Tickometer	1HY	3700.04	86531	10	Access Control System Badge Reader	1NY
3250.90	86531	10	Office Machines and Eqpt, Misc	1HY					
3300.00	86531	10	Cart, Office Mailroom	1HY	3700.08	86531	10	Access/Security/Alarm Eqpt	1NY
3300.10	86531	10	Drafting Eqpt	1HY	3700.12	86531	10	Inspection Service Crime Laboratory Eqpt	1NY
3300.12	86531	10	Drafting Table	1HY					
3300.20	86531	10	Surveying Eqpt	1HY	3700.16	86531	10	Metal Detector	1NY
3400.00	86531	10	Lettering Eqpt and Systems	1HY	3700.20	86531	10	Microscope	1NY

3700.24	86531	10	Photographic Image ID Kit	1NY	3950.82	86533	03	Micro Printer/Keyboard	3TA
3700.28	86531	10	Polygraph	1NY	3960.00	86533	03	Word Processing System	3TW
3700.32	86531	10	Scope, Covert Vehicular	1NY	3960.10	86533	03	Word Processing, Terminal	3TW
3700.36	86531	10	Shooting Range Eqpt	1NY	3960.20	86533	03	Word Processing, Memory Unit	3TW
3700.38	86531	10	Firearms	1NY	3960.30	86533	03	Word Processing, Controller	3TW
3700.40	86531	10	Transmitter, Surveillance	1NY	3960.40	86533	03	Word Processing, Console	3TW
3700.44	86531	10	Surveillance, Misc Eqpt	1NY	3960.50	86533	03	Word Processing, Printer	3TW
3700.48	86531	10	X-ray Eqpt, Misc	1NY	3960.60	86533	03	Word Processing, Keyboard	3TW
3900.00	86533	05	Channel Controller	3TA	3960.70	86533	03	Word Processing, Feeder	3TW
3900.10	86533	03	Disk Pack	3TA	3970.00	86533	03	Graphics System	3TA
3900.20	86533	05	Disk Storage Drive	3TA	3970.10	86533	03	Graphics System, Controller	3TA
3900.30	86533	05	Magnetic Tape Unit	3TA	3970.20	86533	03	Graphics System, Display Unit	3TA
3900.34	86533	05	Magnetic Tape Unit, Automated	3TA	3970.30	86533	03	Graphics System, Plotter	3TA
3900.40	86533	05	Memory Storage Unit	3TA	3980.00	86533	03	Acoustical Covers/Silencing Eqpt	3TY
3900.44	86533	05	Memory Storage, Controller	3TA	3980.04	86533	05	Adapter, ADP	3TY
3900.50	86533	05	Printer	3TA	3980.08	86533	03	Badge, Puncher	3TY
3900.54	86533	05	Printing System	3TA	3980.12	86533	05	Burster, Form or Card	3TY
3900.60	86533	05	Processor, Mainframe	3TA	3980.16	86533	05	Counter, Paper	3TY
3900.64	86533	05	Processor, Mainframe Controller	3TA	3980.20	86533	04	Converter, Card/Paper/Tape Eqpt	3TY
3900.68	86533	05	Processor, Operator Console/Station	3TA	3980.24	86533	05	Decollator	3TY
3900.70	86533	05	Switching Unit	3TA	3980.26	86533	03	EPROM Programmer Device	3TY
3905.00	86533	05	Card Punch	3TA	3980.28	86533	04	Reader/Puncher, Paper Tape	3TY
3905.04	86533	05	Card Reader	3TA	3980.32	86533	03	Recorder, Computer Image	3TY
3905.08	86533	05	Card Sorter	3TA	3980.36	86533	03	Truck, Reel	3TY
3905.10	86533	05	Card Sorting System, ADP	3TY	3990.00	86533	03	Air Contract Data Collection System (ACDCS)	3TY
3905.12	86533	07	Power Conditioner	3TY	3990.10	86533	05	Delivery Receipt System, ADR	3TY
3905.14	86533	05	Power Converter	3TY	3990.20	86533	05	HVAC Energy Management System	3TY
3905.16	86533	05	Power Unit	3TY	3990.30	86533	05	Register Dispatch System, ADSRM	3TY
3905.18	86533	07	Power Protection/Alarm Unit	3TY	3990.40	86533	05	Computerized On-site Data Entry System	3TA
3905.50	86533	05	ADP Cleaning/Maintenance Eqpt	3TY	3995.00	86531	10	Duplicator, Microfilm/Microfiche	1HM
3905.60	86533	05	ADP Testing/Analyzing/Monitoring Eqpt	3TY	3995.10	86533	10	Microfilmer, Computer Output	3TY
3910.00	86533	04	Modem	3TB	3995.20	86531	10	Reader, Microfiche	1HM
3910.10	86533	04	Multiplexor	3TB	3995.30	86531	10	Reader/Printer, Microfiche	1HM
3910.20	86533	04	Telecommunications Unit	3TB	3995.40	86531	10	Reader, Microfilm	1HM
3920.00	86533	03	Data Entry System	3TA	3995.50	86531	10	Reader/Printer, Microfilm	1HM
3920.10	86533	03	Micro Data Entry/Capture System	3TB	4000.00	86232	10	Culling Machine	2DB
3925.00	86533	03	Scanner, Controller	3TC	4000.10	86232	10	Dual Pass Rough Cull System (DPRCS)	2DB
3925.10	86533	03	Scanner, Fixed Unit	3TC	4010.00	86232	10	Canceling Machine, M-36	2DC
3925.20	86533	03	Scanner, Portable Unit	3TC	4010.10	86232	10	Canceling Machine, Mark II	2DC
3930.00	86533	03	Terminal, Badge Reader	3TB	4010.20	86232	10	Canceling/Facing Machine	2DC
3930.10	86533	03	Terminal, CRT/VDT	3TB	4010.30	86232	10	Canceling Machine	2FA
3930.20	86533	03	Terminal, Transaction	3TB	4010.40	86232	10	Canceler Flat	2FA
3930.30	86533	03	Terminal, Point of Sale	3TB	4010.94	86232	05	Modification, Mark II Control	2DC
3930.40	86533	03	Terminal, Scale Input	3TB	4020.00	86232	05	Diverter Edger Feeder Attachment	2DH
3930.50	86533	03	Terminal, Teletype	3TB	4020.10	86232	05	Edger Feeder	2DH
3930.60	86533	03	Terminal, Telecopier	3TB	4020.20	86232	05	Edger Stacker	2DH
3940.00	86533	05	Minicomputer System	3TA	4020.30	86232	05	Inclined Feeder Assembly	2DH
3940.10	86533	05	Minicomputer Processor	3TA	4020.40	86232	10	Stacker Unit	2DH
3950.00	86533	03	Microcomputer System	3TA	4020.50	86232	05	Vibrator Hopper Assembly	2DH
3950.10	86533	03	Micro Controller	3TA	4200.00	86232	10	Conveyor	2FC
3950.20	86533	03	Micro CRT/VDT	3TA	4200.10	86232	10	Conveyor, Extendable	2FB
3950.30	86533	03	Microdisk Drive	3TA	4200.30	86232	10	Conveyor, Tractor	2FY
3950.40	86533	03	Micro Keyboard	3TA	4200.50	86233	10	Dumper, Hamper	3DB
3950.50	86533	03	Micro Memory Storage Unit	3TA	4210.00	86232	10	Rack, Tray Storage	2FY
3950.60	86533	03	Microprocessor	3TA					
3950.70	86533	03	Micro Tape Drive	3TA					
3950.80	86533	03	Micro Printer	3TA					

4220.00	86232	10	Strapping Machine, Nonmetallic	2FF	7000.30	86431	10	Showcase/Display Case	1EY
4220.10	86232	10	Strapping System	2FF	7000.40	86431	10	Turnstile	1EY
4220.20	86232	10	Tying Machine	2FF	7100.10	86432	10	Counterline, Window Multipurpose	2JC
4230.00	86233	05	Tractor, Attachments and Accessories	3DJ	7110.00	86432	10	Postage Meters	2JE
					7120.00	86432	10	Scale, Misc	2JF
4230.10	86233	10	Tractor, Industrial and Farm Type	3DJ	7120.10	86432	05	Scale, Programmable/Electronic	2JF
4230.20	86233	05	Tractor, Tow/Tug/Warehouse	3DJ	7120.20	86432	07	Integrated Retail Terminal (IRT)	2JG
4230.30	86233	10	Tractor, With Autoguidance System	3DJ	7200.00	86433	10	Changer, Coin	3KC
					7200.10	86433	10	Changer, Currency	3KC
4230.40	86233	10	Truck, Forklift	3DJ	7200.20	86433	10	Changer, Currency/Coin	3KC
4230.50	86233	10	Truck, Hand Lift/Pallet	3DJ	7210.10	86433	10	Multicommodity Vending Machine	3KJ
4230.60	86233	10	Truck, Lift Specialized System	3DJ	7210.20	86433	10	Stamp Vending Machine	3KJ
4400.00	86233	10	Carrier, Cargo and Materials	3DG	7210.30	86433	10	Self-Service Postal Center (SSPC)	3KB
4400.10	86233	10	Carrier, Personnel	3DG					
4400.20	86233	05	Scooter	3DG	7210.40	86433	10	Vending Console	3KJ
4410.00	86232	10	Label Printing System	2FD	7300.00	86433	05	Counter, Coin	3KA
4410.10	86233	10	Printer, Address Label	3FY	7300.10	86433	05	Counter, Currency	3KA
4410.20	86233	10	Dispenser, Label	3FY	7300.20	86433	10	Sorter/Changer, Coin	3KA
4410.30	86233	10	Feeder, Label Printer	3FY	7300.30	86433	10	Sorter/Counter, Coin	3KA
4420.00	86233	10	Dispenser, Tape	3FB	7300.40	86433	10	Sorter, Coin	3KA
4420.10	86233	10	Rewrap or Patch-Up Eqpt	3FB	7310.00	86531	10	Safe	1ND
4430.00	86233	10	Scale, Floor or Platform	3FY	7310.10	86531	10	Safe, Vault Shell	1ND
4430.10	86233	10	Scale, Remote Console/Indicator	3FY	7310.20	86531	10	Security Container With Cabinet	1ND
4440.00	86233	10	Envelope Stuffer/Sealer System	3FY	7310.30	86531	10	Vault Door/Entrance	1NE
6000.00	86532	10	Body and Frame Maintenance Eqpt	2PA	8000.00	86531	10	Cafe Eqpt, Cabinet	1RB
6010.00	86532	10	Analyzer, Vehicle Maintenance	2PB	8000.02	86531	10	Cafe Eqpt, Cart	1RB
6010.10	86532	10	Engine Maintenance Eqpt	2PC	8000.04	86531	10	Cafe Eqpt, Cash Register	1RB
6010.20	86532	10	Grinder, Valve	2PC	8000.06	86531	10	Cafe Eqpt, Coffee Urn	1RB
6010.30	86532	10	Test Eqpt, Vehicle Electrical Systems	2PC	8000.08	86531	10	Cafe Eqpt, Condiment Stand	1RB
					8000.10	86531	10	Cafe Eqpt, Counterline	1RB
6010.40	86532	10	Test Eqpt, Vehicle Tune-Up/Diagnosis	2PC	8000.12	86531	10	Cafe Eqpt, Dining Table	1RB
					8000.14	86531	10	Cafe Eqpt, Dishwasher	1RB
6010.50	86532	10	Test Eqpt, Vehicle Exhaust	2PC	8000.16	86531	10	Cafe Eqpt, Display Case	1RB
6020.00	86532	10	Dolly, Vehicle Towing	2PD	8000.18	86531	10	Cafe Eqpt, Disposal Unit	1RB
6020.10	86532	10	Jack	2PD	8000.20	86531	10	Cafe Eqpt, Drink Dispenser	1RB
6020.30	86532	10	Lift, Vehicle	2PD	8000.22	86531	10	Cafe Eqpt, Freezer	1RB
6020.40	86532	10	Stand, Vehicle Maintenance	2PD	8000.24	86531	10	Cafe Eqpt, Fryer	1RB
6020.50	86532	10	Truck, Forklift/Tow, Vehicle Maintenance	2PD	8000.26	86531	10	Cafe Eqpt, Grill	1RB
					8000.28	86531	10	Cafe Eqpt, Hood	1RB
6030.00	86532	10	Pump, Servicing/Dispensing	2PE	8000.32	86531	10	Cafe Eqpt, Ice Dispenser	1RB
6030.10	86532	10	Servicing/Dispensing Eqpt	2PE	8000.34	86531	10	Cafe Eqpt, Ice Maker	1RB
6030.20	86532	10	Tank, Gas	2PE	8000.36	86531	10	Cafe Eqpt, Ice Storage	1RB
6030.30	86532	10	Tank, Oil	2PE	8000.38	86531	10	Cafe Eqpt, Kettle	1RB
6040.00	86532	10	Tire Maintenance Eqpt	2PG	8000.40	86531	10	Cafe Eqpt, Kitchen Worktable	1RB
6050.00	86532	10	Cleaning Eqpt, VMF Maintenance	2PH	8000.42	86531	10	Cafe Eqpt, Microwave	1RB
6050.10	86532	10	Washer, Vehicle	2PH	8000.44	86531	10	Cafe Eqpt, Misc Cooking and Heating	1RB
6060.00	86532	10	Wheel/Suspension Maintenance Eqpt	2PJ	8000.46	86531	10	Cafe Eqpt, Misc Food Preparation Eqpt	1RB
6070.00	86532	10	Brake Maintenance Eqpt Vehicles	2PY					
6080.00	86532	10	Charger, Battery	2PY	8000.48	86531	10	Cafe Eqpt, Misc Appliances	1RB
6090.00	86532	10	Body, Utility Vehicle Maintenance Service	2PY	8000.50	86531	10	Cafe Eqpt, Mixer	1RB
					8000.52	86531	10	Cafe Eqpt, Oven	1RB
6090.10	86532	10	Dynamometer, Vehicle	2PY	8000.54	86531	10	Cafe Eqpt, Rack/Shelving	1RB
6090.20	86532	10	Puller Eqpt	2PY	8000.56	86531	10	Cafe Eqpt, Range	1RB
6090.30	86532	10	Starter, Vehicle	2PY	8000.58	86531	10	Cafe Eqpt, Refrigerator	1RB
6090.90	86532	10	VMF Maintenance Eqpt, Misc	2PY	8000.60	86531	10	Cafe Eqpt, Serv-O-Lifts	1RB
7000.00	86431	10	Bulletin Board, Lobby	1EY	8000.62	86531	10	Cafe Eqpt, Sink	1RB
7000.10	86431	10	Desk/Table, Lobby	1EY	8000.64	86531	10	Cafe Eqpt, Slicer	1RB
7000.20	86431	10	Dispenser, Ticket Machine	1EY					

8000.66	86531	10	Cafe Eqpt, Steam Table	1RB	8200.10	86531	05	Projector, Movie	1ME
8000.68	86531	10	Cafe Eqpt, Tray Handling Eqpt	1RB	8200.20	86531	05	Projector, Opaque	1ME
8000.70	86531	10	Cafe Eqpt, Warming Cabinet	1RB	8200.30	86531	05	Projector, Overhead	1ME
8010.00	86531	10	Audiometer	1RE	8200.40	86531	05	Projector, Slide	1ME
8010.04	86531	10	Bed, Medical Unit	1RE	8200.50	86531	05	Projector, Strip Film	1ME
8010.08	86531	10	Booth, Audiometer Examining	1RE	8200.60	86531	05	Projector, Television	1ME
8010.12	86531	10	Cabinet, Medical Unit	1RE	8200.70	86531	05	Screen, Projection	1ME
8010.16	86531	10	Cart, Medical Unit	1RE	8200.80	86531	05	Viewer, Slide/Strip/Movie	1ME
8010.20	86531	10	Chair, Medical Treatment	1RE	8200.90	86531	05	Projector Accessories and Misc Eqpt	1ME
8010.24	86531	10	Electrocardiograph	1RE					
8010.28	86531	10	Hydrocollator	1RE	8210.00	86531	05	Amplifier, Power/Sound	1MC
8010.32	86531	10	Light, Medical Unit	1RE	8210.10	86531	10	Lectern	1MC
8010.36	86531	10	Medical Instrument/Diagnostic Eqpt	1RE	8210.20	86531	10	Microphone	1MC
					8210.30	86531	10	Speaker System	1MC
8010.40	86531	10	Medical Treatment Eqpt and Devices	1RE	8220.00	86531	10	Audio, Player/Recorder	1MF
					8220.10	86531	10	Duplicator, Audio	1MF
8010.44	86531	10	Resuscitator Manikin	1RE	8230.00	86531	10	Audiovisual Special Effects Eqpt	1MY
8010.48	86531	10	Shower/Wash, Medical or Safety	1RE	8230.10	86531	10	Control Console, Audiovisual	1MY
8010.52	86531	10	Sterilizer	1RE	8230.20	86531	10	Lights and Lighting, Specialized	1MY
8010.60	86531	10	Table/Couch, Medical Exam/Treatment	1RE	8230.30	86531	10	Visual Presentation Eqpt	1MY
					8230.90	86531	10	Audiovisual, Misc Eqpt	1MY
8010.64	86531	10	Vision Testing/Measuring Device	1RE	8300.00	86531	05	Closed-circuit Television System	1MH
8010.68	86531	10	X-ray Eqpt, Medical Unit	1RE	8300.10	86531	05	Intercom, Closed-circuit Television	1MH
8030.00	86531	10	Scoring, Test, Machine	1RC	8300.20	86531	05	Monitor, Television	1MH
8030.02	86531	10	Trainer, Basic Electricity	1RC	8300.30	86531	05	Television	1MH
8030.04	86531	10	Trainer, Basic Hydraulic/Pneumatics	1RC	8300.40	86531	05	Video, Player/Recorder	1MF
					8300.50	86531	05	Video Special Effects Eqpt	1MH
8030.08	86531	10	Trainer, Computer Electronics	1RC	8500.00	86531	10	Grommet Machine	1QA
8030.12	86531	10	Trainer, Driver Training System	1RC	8500.10	86531	07	Key Manufacturing Machine, Mail Eqpt Shop	1QA
8030.16	86531	10	Trainer, Electrical Systems	1RC					
8030.20	86531	10	Trainer, Elevator Maintenance	1RC	8500.20	86531	10	Screw Machine	1QA
8030.24	86531	10	Trainer, Keyboard	1RC	8500.30	86531	10	Shaping/Forming Machine	1QA
8030.28	86531	10	Trainer, Keyboard Parcel Sack	1RC	8500.40	86531	10	Tooling Machine, Electric Discharge	1QA
8030.32	86531	10	Trainer, LSM Training Console	1RC					
8030.36	86531	10	Trainer, Misc HVAC and Building Systems	1RC	8500.90	86531	10	Mail Eqpt Shop, Misc Eqpt	1QA
					8510.00	86531	10	Coil Cradle Eqpt	1QB
8030.40	86531	10	Trainer, Misc Vehicle Systems	1RC	8510.10	86531	10	Sealer, Heat Type	1QB
8030.44	86531	10	Trainer, Misc	1RC	8510.20	86531	10	Sewing Machine	1QB
8030.48	86531	10	Trainer, Parcel or Sack Sorter	1RC	8510.90	86531	10	Mailbag Facility, Misc Eqpt	1QB
8030.52	86531	10	Training System, Audiovisual	1RC	8600.00	86531	10	Cardboard Case-making Machine	1HY
8030.56	86531	10	Training Visual Aid	1RC	8600.10	86531	10	Forming Machine, Carton or Trays	1HY
8040.00	86531	10	Camera, ID	1MB	8700.00	86531	10	Fire, Rescue, and Safety Eqpt	1RY
8040.10	86531	10	Cutter, ID Badge	1MB	8900.00	86531	10	Aircraft	1RP
8040.20	86531	10	Laminator, ID Badge	1MB	9000.00	86231	10	Bulk Conveyor	1DF
8100.00	86531	05	Camera	1MB	9000.10	86231	10	Fixed Mechanization Memory Container System	1DF
8100.20	86531	05	Camera, Document	1MB					
8100.30	86531	05	Camera, Microfilm	1MB	9000.20	86231	10	Loose Mail Conveyor System	1DF
8100.40	86531	05	Camera, Movie	1MB	9000.30	86231	10	Mail Preparation System	1DF
8100.50	86531	05	Camera, Video	1MH	9000.35	86231	10	Monorail Sorting System	1DF
8100.60	86531	05	Camera Accessories	1MB	9000.40	86231	10	Multibelt Sorting System	1DF
8100.70	86531	05	Lens	1MB	9000.50	86231	10	Multislide	1DF
8110.00	86531	10	Cabinet/Special Furniture, Film Process	1MD	9000.60	86231	10	Pallet Unloader	1DF
					9000.70	86231	10	PP Distribution Ring	2DF
8110.10	86531	10	Dryer, Film Processing	1MD	9000.80	86231	10	Tray Transport System	1DF
8110.20	86531	10	Enlarger, Film Processing	1MD	9100.00	86232	10	Letter Sorting Machine, Multiposition(MPLSM)	2DD
8110.30	86531	10	Printer, Film Processing	1MD					
8110.40	86531	10	Processor, Film	1MD	9100.10	86232	10	Letter Sorting Machine, Single Position	2DD
8110.50	86531	10	Sink, Film Processing	1MD					
8110.90	86531	10	Film Processing, Misc Eqpt	1MD	9100.20	86232	10	LSM-Tray Conveyor System	2DD
8200.00	86531	05	Projector, Computer Image	1ME	9100.30	86232	10	LSM-ZIP Mail Translator	2DD

9100.34	86232	10	LSM-Electronic Sort Processor	2DD	9600.10	86232	10	Reader, Optical Character (OCR/CS)	2DD
9100.91	86232	10	LSM-Expanded ZIP Retrofit	2DD					
9100.92	86232	07	LSM-EZR Maintenance Terminal	2DD	9600.20	86235	10	Remote Bar Coding Image Processing System	2DD
9100.94	86232	10	LSM-Vacuum System	2DD					
9200.00	86232	10	Flats Sorter Machine	2DK	9700.00	86231	10	BMC Container Loader/Unloader	1DF
9200.10	86232	10	Flats Sorter Bin Unit	2DK	9700.10	86231	10	BMC Inbound-Outbound Tow Conveyor	1DF
9200.20	86232	10	Flats Sorter Culling Unit	2DK					
9200.30	86232	10	Flats Sorter Extractor Unit	2DK	9700.20	86231	10	BMC Parcel Sorting Induction InductionUnit	1DF
9200.40	86232	10	Flats Sorter Feed Unit	2DK					
9300.00	86231	10	Parcel Sorting Machine	1DF	9700.22	86231	10	BMC Parcel Sorting Machine	1DF
9300.40	86232	10	Small Parcel/Bundle Sorter System	2DL	9700.30	86231	10	BMC Process Control System	1DF
9300.50	86231	10	Small Parcel/Roll Sorter System	1DF	9700.40	86231	10	BMC Sack Shakeout Machine	1DF
9400.00	86231	10	Sack Sorting Machine	1DF	9700.50	86231	10	BMC Sack Sorter and Loader	1DF
9500.00	86232	10	Bar Code Reader	2DD	9700.60	86231	10	BMC Towveyor-Internal Tow Conveyor	1DF
9500.10	86232	10	Carrier Sequence Bar Code Sorter (CSBCS)	2DD	9700.62	86231	10	BMC Towveyor-Wearbar Lubricator	1DF
9500.20	86235	10	Delivery Bar Code Sorters (DBCS)	2DD	9999.98	86232	10	Installation Cost, Nonfixed Mechanization	2GG
9600.00	86232	10	Reader, Optical Character	2DD					